

# Benchtop Low-Speed Refrigerated Centrifuge LX-60T750R



## Scope of Application :

With a variety of large-capacity rotors, it can meet the needs of clinical biochemistry, molecular biology, cell culture and other large-throughput sample processing, and is widely used in medical, scientific research, pharmaceutical and other fields.



Short pre-cooling time and precise temperature control performance



Wide range of rotors for application flexibility, compatible with tubes/bottles from 0.2 ml to 750ml



Real time loading imbalance detection, immediate shutdown protection in case of imbalance

**Qingdao Haier Biomedical Technology Co., Ltd.**

No.280 Feng Yuan Road, High-tech Zone,  
Qingdao, 266111, P.R. China  
E-mail: [inquiry@haierbiomedical.com](mailto:inquiry@haierbiomedical.com)  
Website: [www.haiermedical.com](http://www.haiermedical.com)  
Nov, 2025



Haier Biomedical  
International



Haier Biomedical  
International



@haiermedicalint



Haier Biomedical  
International



Haier Biomedical  
International



## Product Features



Short pre-cooling time and precise temperature control performance



Wide range of rotors for application flexibility, compatible with tubes/bottles from 0.2 ml to 750ml



Use of brushless induction motors to provide maintenance-free operation, eliminating carbon particle emissions



Optimized sound design for low noise levels( $\leq 63\text{dB(A)}$ )



Automatic rotor identification and rotor life monitoring for maximum operational safety



Real time loading imbalance detection, immediate shutdown protection in case of imbalance



Only 35 seconds to rise to the maximum speed under full load of 4\*750ml



Low center of gravity design, amplitude less than 0.06mm, ensuring stable operation and good centrifugal effect

## Intuitive Interface



The 7-inch 45° glove-friendly touchscreen, the wide viewing angle more comfortable and practical for users of all heights



Further enhanced with access controls such as user login with password protection, the independent program data of each user is managed separately



Quick recall of up to 1000+ programs with alpha-numeric naming to minimize time between runs and for quick run start by routine users



The speed, centrifugal force, time and temperature can be changed by user during the centrifugation process



9 acceleration + 10 deceleration stages

Acceleration/  
Deceleration  
rates.

Target speed/  
centrifugal force  
and real-time  
speed display.



Temperature set-point  
and real-time temperature  
display.

Quick access to stored  
programs. 1000+ program  
storage, supports customized  
programs for convenient.

Clear one-touch buttons for fast refrigeration,  
fast centrifugation,  
intelligent start-stop and lid-closing status.



## Product Parts



Intelligent lid locking monitoring and dual automatic self-locking to ensure safe operation



Dual gas springs with safety protection



Drainage tray to prevent internal water accumulation and improve corrosion resistance



Triple-layer construction to ensure safe use



316 stainless steel centrifuge chamber is rust-free and easy to clean



USB port for exporting operation record including speed, time and temperature, operation curve with alarm messages etc



## Key Features of Quick-Flip Biocontainment Safety Lids

- Quick-Flip Hinge Design**  
Our hinged lids do not need to be removed from the rotor. Just a quick flip gives you fast access to your samples
- Low-Pressure Closing Clip**  
The simple low-pressure clip offers a secure closure with an audible "click" and visual cues, enhancing safety and replacing multi-turn screw caps or complex lever systems
- Ambidextrous & Glove-Friendly**  
Designed for ease of use, our lids can be operated with either hand and are glove-friendly, ensuring seamless operation
- Premium Polymer Construction**  
Made from Polyetherimide (PEI), our lids provide excellent chemical resistance, transparency, and durability
- Certified Safety and Reliability**  
Independently tested and certified per IEC-61010 Section 2-020 Annex AA, ensuring top-level safety and performance

Choose our Quick-Flip biocontainment safety lids for innovative, safe, and durable lab solutions.



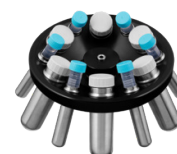



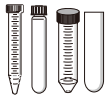
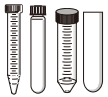
## Specifications

Model	Maximum Capacity	Max Speed (rpm)	Max RCF(xg)	Speed Accuracy (rpm)	Time Setting Range	Precooling Function	Temperature Setting Range(°C)	Display
LX-60T750R	4*750ml	6,000	5,353	±10	1s ~ 99h59m59s (1-second increment)	Yes	-20 ~ 40, adjustable to 1	7 inch touch screen
Noise Level (dB(A))	Power Supply (V/Hz)	Power(W)	Exterior Dimensions (W*D*H)(mm)	Lid Opening Height (mm)	Net Weight (kg)	Packing Dimensions (W*D*H)(mm)	Gross Weight (kg)	Certifications
≤63	220-240/50/60	1600	680*715*375	860	115	820*800*580	140	CE



## Fixed-Angle Rotor



BE No.	BE12DF000	BE12DG000	BE12D9001
Type	Steel sleeves	Steel sleeves	Steel sleeves
Max Capacity	42*15ml	12*50 (15)ml	6*50 (15)ml
Max RCF (xg)	4,472	4,640	5,353
Max Speed (rpm)	5,000	5,000	6,000
Tubes per Rotor	42	12pcs (50ml) 12pcs (15ml)	6pcs (50ml) 6pcs (15ml)
Tube			
Max Tube Capacity (ml)	15	50 (15)	50 (15)
Max Tube Dimension (Ø x L mm)	17*121	29*118 17*121	29*118 17*121
Tube Type	Round /Conical bottom	Round /Conical bottom	Round /Conical bottom

\*Haier Biomedical also can provide 0.2ml adapter (sets of 24) (BE12J2003), 0.5ml adapter (sets of 24) (BE12JN002) for 1.5/2ml tube rotor



## Swing-Out Rotor



**Swing-Out Rotor Block**



**BE No.** BE12FN001

**Max. RCF (xg)** 3,488

**Max. speed (rpm)** 4,000



**Round Bucket (Sets of 4)**



**BE No.** BE12G5000

**Max Capacity (ml)** 750

**Bucket Type** Flat bottom

**Adapter (Sets of 4) for BE12G5000**



BE No.	No Adapter Needed	BE12J3003	BE12J4003	BE12J5003	BE12J6003	BE12J7003	BE12J8003	BE12J9003	BE12JA003
<b>Max Capacity</b>	750ml	500ml	250ml	4*100ml	7*50ml	16*15ml	23*10ml	31*5/7ml	56*1.5ml
<b>Tubes per adapter / rotor</b>	4	1/4	1/4	4/16	7/28	16/64	23/92	31/124	56/224
<b>Tube</b>									
<b>Max Tube Dimensions (Ø x L mm)</b>	99*140	96*150	60*165	38*120	29*118	17*121	16*106	13*75/106	11*38
<b>Tube Type</b>	Flat bottom	Conical bottom	Conical bottom	Round bottom	Conical bottom	Conical bottom	Large blood collection tube (Ø16mm)	Short/long blood collection tube	Conical bottom





## Swing-Out Rotor



Swing-Out  
Rotor Block



Round Bucket  
(Sets of 4)



BE No. BE12FN001

Max. RCF (xg) 3,488

Max. speed (rpm) 4,000







BE No. BE12HB000

Max Capacity -

Bucket Type Flat bottom

Adapter(Sets of 4)  
for BE12HB000



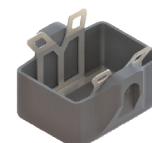
BE No.	BE12JB003	BE12JC003	BE12JD003	BE12JE003
Max Capacity	9*50ml	20*15ml	30*10ml	39*5/7ml
Tubes Per Adapter/Rotor	9/36	20/80	30/120	39/156
Tube				
Max Tube Dimensions(Ø x L mm)	29*118	17*121	16*106	13*75/106
Tube Type	Conical bottom	Conical bottom	Large blood collection tube (Ø16mm)	Short/long blood collection tube



Swing-Out  
Rotor Block



Round Bucket  
(Sets of 4)



BE No. BE12FN001

Max. RCF (xg) 3,148

Max. speed (rpm) 4,000

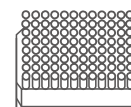
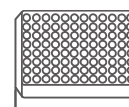
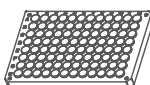
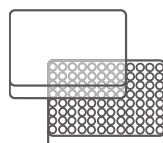
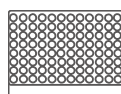


BE No. BE12G0000

Max Capacity -

Bucket Type Rectangular bottom  
Max height 60mm

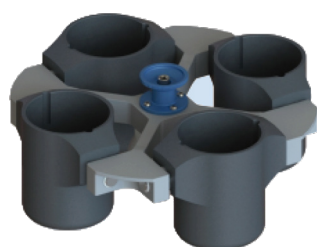
Plates for  
BE12G0000



Plates per bucket/rotor	4/16	3/12	3/12	1/4	1/4
W*D*H (mm)	128*86*15	128*86*17.5	128*86*20	128*86*44.5	128*86*60
Plate Type	MTP (without lid)	MTP (with lid)	PCR plate 96-fold	DWP	Filter plate



## Swing-Out Rotor



Swing-Out Rotor  
with Round Buckets

Swing-Out  
Rotor Block



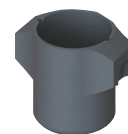
BE No. BE12FJ001

Max. RCF (xg) 3,184

Max. speed (rpm) 4,000



Round Bucket  
(Sets of 4)



BE No. BE12G0000

Max Capacity (ml) 500

Bucket Type Flat bottom



Swing-Out Rotor with  
Biocontainment Round  
Buckets

Swing-Out  
Rotor Block



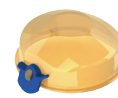
BE No. BE12FJ001

Max. RCF (xg) 3,184

Max. speed (rpm) 4,000



Round Bucket &  
Lid (Sets of 4)




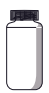
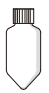


BE No. BE12G8000 BE12J2004

Max Capacity (ml) 500 NA

Bucket Type Flat bottom NA

Adapter (Sets of 4)  
for BE12G0000, BE12G8000







BE No.	No Adapter Needed	BE12JP001	BE12FG001	BE12FF001	BE12JS001
Max Capacity	500ml	250ml	225ml	100ml	4*50ml
Tubes Per Adapter/Rotor	4	1/4	1/4	1/4	4/16
Tube					
Max Tube Dimensions (Ø x L mm)	80*136	62*123	60*136	38*120	29*118
Tube Type	Flat bottom	Flat bottom	Conical bottom	Round bottom	Conical bottom



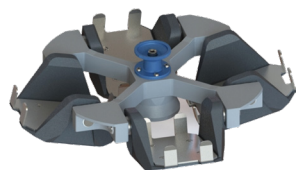
## Swing-Out Rotor

Adapter (Sets of 4)  
for BE12G0000, BE12G8000



BE No.	BE12JR001	BE12JQ001	BE12JD002	BE12JE002
Max Capacity	10*15ml	14*10ml	19*7/5ml	30*1.5/2ml
Tubes Per Adapter/Rotor	10/40	14/56	19/76	30/120
Tube				
Maximum Tube Dimensions (Ø x L mm)	17*121	16*106	13*75/106	11*38
Tube Type	Conical bottom	Large blood collection tube (Ø16mm)	Short/long blood collection tube	Round/Conical bottom

\*Haier Biomedical also can provide 0.2ml adapter (sets of 24) (BE12J2003), 0.5ml adapter (sets of 24) (BE12JN002) for 1.5/2ml tube rotor



Swing-Out Rotor  
with Plate Buckets

Swing-Out  
Rotor Block

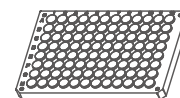
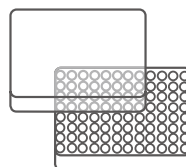
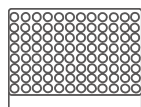


Plate Bucket  
(Sets of 4)



BE No.	BE12FJ001	+	BE No.	BE12H5000
Max. RCF (xg)	2,612		Max Capacity	1 plate
Max. speed (rpm)	4,000		Bucket Type	Rectangular bottom

Plates for  
BE12H5000



Plates per bucket/rotor	4	4	4
W*D*H (mm)	128*86*15	128*86*17.5	128*86*20
Plate Type	MTP (without lid)	MTP (with lid)	PCR plate 96-fold