

Floor-Standing Highspeed Refrigerated Centrifuge

LX-210L750R



Scope of Application :

Haier Biomedical LX-210L750R is a floor-standing highspeed refrigerated centrifuge features with 3L capacity and performance up to 47,400 x g, which is ideal for all-purpose use in the industrial and research sectors.

Qingdao Haier Biomedical Technology Co.,Ltd.

No.280 Feng Yuan Road, High-tech Zone,
Qingdao, 266109, P.R. China
E-mail: inquiry@haierbiomedical.com
Website: www.haiermedical.com



Haier Biomedical
International



Haier Biomedical
International



@haiermedicalint



Haier Biomedical
International



Haier Biomedical
International



Excellent Performance



Offering a broad portfolio of fixed-angle and swing-out rotors, which can accommodate tubes and bottles from 1.5 ml to 750 ml, as well as deep-well plates



Optimized multi-layer shock absorption technology makes the sound level ≤ 56 (dB(A))



Automatic radio-frequency rotor identification (RFID) that enables immediate identification of a rotor once it is securely placed in the centrifuge chamber, avoid over-speed, reduce error messages, and enhance the safety



High-strength, aero-aluminum rotor, which is acid and alkali corrosion-resistant, greatly increases the service life, and allows for 50,000 uses



Low center of gravity design, amplitude less than 0.05mm, ensuring stable operation and good centrifugal effect



Use of brushless induction motors to provide maintenance-free operation, eliminating carbon particle emissions

User-friendly Design



Dual self-lock design to ensure safe operation



Dual gas springs with safety protection



4 universal casters and 4 levelling feet allows for easy movement and locks safely into place



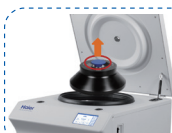
316 stainless steel centrifuge chamber is rust-free and easy to clean



USB port for exporting operation record including speed, time and temperature, operation curve with alarm messages etc.



Triple-layer construction to ensure safe use



- Patented tool-free rotor exchange technology enables the installation and removal of rotors on the centrifuge automatically and securely without the need for an tools
- Pull the handle to quickly remove and install the rotor



Intuitive Interface



The 7-inch 45° glove-friendly touchscreen, the wide viewing angle more comfortable and practical for users of all heights



Further enhanced with access controls such as user login with password protection, the independent program data of each user is managed separately



Easily monitor the display of set and actual run conditions with enlarged track bar during the run for clear visibility, which ensures the operator can see them from a distance



Quick recall of up to 1000+ programs with alpha-numeric naming to minimize time between runs and for quick run start by routine users



The speed, centrifugal force, time and temperature can be changed by user during the centrifugation process



11 acceleration + 12 deceleration stages

Progress bar

Target speed/centrifugal force and real-time speed display

Temperature set-point and real-time temperature display

Quick access to stored programs. 1000+ program storage, supports customized programs for convenient

Clear one-touch buttons for fast refrigeration, fast centrifugation, intelligent start-stop and lid-closing status

Enhanced Safety



Real time loading imbalance detection and intelligent lid locking monitoring, immediate shutdown protection in case of imbalance or lid opening



Adopting $\Phi 80$ mm adjustable feet for more stable installation



Multiple alarm including abnormal voltage alarm, high temperature alarm, overspeed alarm, load imbalance alarm, rotor absent alarm, brake abnormal alarm, rotor life reminder alarm, and other alarm functions



Fully covered steel plate protective sleeve and 12mm steel shell



Specifications

| Model | LX-210L750R |
|---------------------------------|------------------------------------|
| Max Capacity | 4*750ml |
| Speed Range (rpm) | 500-21,000 |
| Max RCF (xg) | 47,400 |
| Speed Accuracy | ±10rpm |
| Time Setting Range | 1min~99h59m59s(1-second increment) |
| Precooling Function | Yes |
| Temperature Setting Range | -20~40, adjustable to 1 |
| Display | 7 inch touch screen |
| Cooling | Direct Cooling |
| Noise (dB(A)) | ≤56 |
| Power Supply(V/Hz) | AC220 50/60Hz |
| Power (W) | 3400 |
| Exterior Dimensions (W*D*H)(mm) | 920*740*990 |
| Lid Opening Height (mm) | 1720 |
| Net Weight (kg) | 375 |
| Packing Dimensions (W*D*H)(mm) | 1150*940*1270 |
| Gross Weight (kg) | 470 |
| Certification | CE |



Fixed-angle Rotor



| | |
|------------------------|------------------|
| BE No. | BE12D0001 |
| Type | Sealed |
| Max Capacity | 6*500ml |
| Max RCF (xg) | 17,778 |
| Max Speed (rpm) | 10,000 |

Adapter(Sets of 6) for BE12D0001



| BE No. | No adapter needed | BE12JT002 | BE12JU002 | BE12JV002 | BE12JW002 | BE12JX002 | BE12JY002 | BE12JZ002 | BE12J0003 | BE12J1003 |
|---------------------------------------|-------------------|-------------|--------------|--------------|----------------|--------------|----------------|--------------|--------------|-----------------------|
| Max Capacity | 500ml | 250ml | 100ml | 2*50ml | 2*50ml | 4*30ml | 7*15ml | 8*10ml | 10*5ml | 14*1.5/2ml |
| Tubes Per Adapter/Rotor | 6 | 1/6 | 1/6 | 2/12 | 2/12 | 4/24 | 7/42 | 8/48 | 10/60 | 14/84 |
| Tube | | | | | | | | | | |
| Max Tube Dimensions (Ø x L mm) | 69.5*170 | 62*126 | 38*120 | 29*105 | 29*118 | 25*102 | 17*121 | 16*86 | 13*54 | 11*38 |
| Tube Type | Flat bottom | Flat bottom | Round bottom | Round bottom | Conical bottom | Round bottom | Conical bottom | Round bottom | Round bottom | Conical /Round bottom |





Fixed-angle Rotor



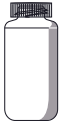

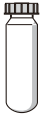


| | |
|------------------------|------------------|
| BE No. | BE12D1001 |
| Type | Sealed |
| Max Capacity | 6*250ml |
| Max RCF (xg) | 25,115 |
| Max Speed (rpm) | 12,000 |



| | |
|------------------------|------------------|
| BE No. | BE12D5001 |
| Type | Sealed |
| Max Capacity | 4*250ml |
| Max RCF (xg) | 29,440 |
| Max Speed (rpm) | 14,000 |

Adapter(Sets of 6) for BE12D1001, BE12D5001



| BE No. | No adapter needed | BE12JF003 | BE12JG003 | BE12JH003 | BE12JJ003 |
|--|---|---|---|---|---|
| Max Capacity | 250ml | 100ml | 50ml | 50ml | 5*15ml |
| Tubes per adapter/rotor (BE12D1001) | 6 | 1/6 | 1/6 | 1/6 | 5/30 |
| Tubes per adapter/rotor (BE12D5001) | 4 | 1/4 | 1/4 | 1/4 | 5/20 |
| Tube |  |  |  |  |  |
| Max Tube Dimensions (Ø x L mm) | 62*123 | 38*120 | 29*105 | 29*118 | 17*121 |
| Tube Type | Flat bottom | Round bottom | Round bottom | Conical bottom | Conical bottom |



Fixed-angle Rotor



| | |
|------------------------|------------------|
| BE No. | BE12D4001 |
| Type | Sealed |
| Max Capacity | 10*100ml |
| Max RCF (xg) | 21,280 |
| Max Speed (rpm) | 12,000 |

Adapter(Sets of 6) for BE12D0001



| BE No. | No adapter needed | BE12JS003 | BE12JR003 | BE12JQ003 | BE12JN003 | BE12JP003 | BE12JT003 |
|---------------------------------------|-------------------|--------------|----------------|--------------|--------------|----------------|--------------|
| Max Capacity | 100ml | 50ml | 50ml | 25ml | 15ml | 15ml | 2*10ml |
| Tubes Per Adapter/Rotor | 10 | 1/10 | 1/10 | 1/10 | 1/10 | 1/10 | 2/20 |
| Tube | | | | | | | |
| Max Tube Dimensions (Ø x L mm) | 38*120 | 29*105 | 29*118 | 22*110 | 17*121 | 17*121 | 16*86 |
| Tube Type | Round bottom | Round bottom | Conical bottom | Round bottom | Round bottom | Conical bottom | Round bottom |



Fixed-angle Rotor



| | |
|------------------------|------------------|
| BE No. | BE12D7001 |
| Type | Sealed |
| Max Capacity | 8*50ml |
| Max RCF (xg) | 38,460 |
| Max Speed (rpm) | 18,000 |

Adapter(Sets of 8) for BE12D7001



| BE No. | No adapter needed | BE12JK003 |
|--------------------------------------|--------------------------|------------------|
| Max Capacity | 50ml | 15ml |
| Tubes Per Adapter/Rotor | 1/8 | 1/8 |
| Tube | | |
| Max Tube Dimensions(Ø x L mm) | 29*105 | 17*121 |
| Tube Type | Round bottom | Round bottom |



Fixed-angle Rotor



| | |
|------------------------|----------------------|
| BE No. | BE12D6001 |
| Type | Sealed, round bottom |
| Max Capacity | 6*50ml |
| Max RCF (xg) | 44,800 |
| Max Speed (rpm) | 20,000 |

Adapter(Sets of 6) for BE12D6001



| BE No. | No adapter needed | BE12JM003 | BE12JL003 |
|---------------------------------------|-------------------|--------------|--------------|
| Max Capacity | 50ml | 30ml | 15ml |
| Tubes Per Adapter/Rotor | 1/6 | 1/6 | 1/6 |
| Tube | | | |
| Max Tube Dimensions (Ø x L mm) | 29*105 | 25*102 | 17*121 |
| Tube Type | Round bottom | Round bottom | Round bottom |



| | |
|------------------------|------------------------|
| BE No. | BE12D8001 |
| Type | Sealed, conical bottom |
| Max Capacity | 6*50ml |
| Max RCF (xg) | 44,800 |
| Max Speed (rpm) | 20,000 |

Adapter(Sets of 6) for BE12D8001



| BE No. | No adapter needed | BE12JC002 |
|---------------------------------------|-------------------|----------------|
| Max Capacity | 50ml | 15ml |
| Tubes Per Adapter/Rotor | 1/6 | 1/6 |
| Tube | | |
| Max Tube Dimensions (Ø x L mm) | 29*118 | 17*121 |
| Tube Type | Conical bottom | Conical bottom |



Fixed-angle Rotor



| BE No. | BE12D3001 |
|-----------------|-----------|
| Type | Sealed |
| Max Capacity | 12*15ml |
| Max RCF (xg) | 28,618 |
| Max Speed (rpm) | 16,000 |



Tube for BE12D3001

| | |
|--------------------------------|----------------|
| Max Tube Capacity | 15ml |
| Tube per Rotor | 12 |
| Max Tube Dimensions (Ø x L mm) | 17*121 |
| Tube Type | Conical bottom |



| BE No. | BE12D2001 |
|-----------------|-----------|
| Type | Sealed |
| Max Capacity | 16*10ml |
| Max RCF (xg) | 47,400 |
| Max Speed (rpm) | 21,000 |



Tube for BE12D2001

| | |
|--------------------------------|--------------|
| Max Tube Capacity | 10ml |
| Tube per Rotor | 16 |
| Max Tube Dimensions (Ø x L mm) | 16*86 |
| Tube Type | Round bottom |



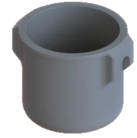
Swing-out Rotor



Swing-out Rotor Block



Round Bucket (Sets of 4)



| | |
|-------------------|------------------|
| BE No. | BE12FS001 |
| Max. RCF | 3488xg |
| Max. speed | 4000rpm |



| | |
|---------------------|------------------|
| BE No. | BE12G5000 |
| Max. RCF | 3488xg |
| Max. speed | 4000rpm |
| Max Capacity | 750ml |
| Bucket Type | Flat bottom |

Adapter (Sets of 4) for BE12G5000



| BE No. | No adapter needed | BE12J3003 | BE12J4003 | BE12J5003 | BE12J6003 | BE12J7003 | BE12J8003 | BE12J9003 | BE12JA003 |
|---------------------------------------|-------------------|----------------|----------------|--------------|----------------|----------------|--------------|-----------------------------------|----------------------|
| Max Capacity | 750ml | 500ml | 250ml | 4*100ml | 7*50ml | 16*15ml | 23*10ml | 31*7/5ml | 56*1.5/2ml |
| Tubes Per Adapter/Rotor | 4 | 1/4 | 1/4 | 4/16 | 7/28 | 16/64 | 23/92 | 31/124 | 56/224 |
| Tube | | | | | | | | | |
| Max Tube Dimensions (Ø x L mm) | 99*140 | 96*150 | 60*165 | 38*120 | 29*118 | 17*121 | 16*86 | 13*75/100 | 11*38 |
| Tube Type | Flat bottom | Conical bottom | Conical bottom | Round bottom | Conical bottom | Conical bottom | Round bottom | Small/Large blood collection tube | Conical/Round bottom |

Swing-out Rotor



Swing-out Rotor Block







Square Bucket (Sets of 4)



| BE No. | BE12FS001 | + | BE No. | BE12HB000 |
|------------|-----------|---|--------------|-------------|
| Max. RCF | 3488xg | | Max. RCF | 3488xg |
| Max. speed | 4000rpm | | Max. speed | 4000rpm |
| | | | Max Capacity | - |
| | | | Bucket Type | Flat bottom |

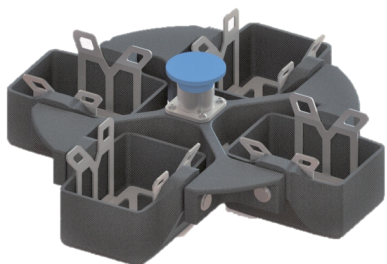
Adapter (Sets of 4) for BE12HB000



| BE No. | BE12JB003 | BE12JC003 | BE12JD003 | BE12JE003 |
|------------------------------------|---|---|---|---|
| Max Capacity | 9*50ml | 20*15ml | 30*10ml | 39*7/5ml |
| Tubes Per Adapter/Rotor | 9/36 | 20/80 | 30/120 | 39/156 |
| Tube |  |  |  |  |
| Maximum Tube Dimensions (Ø x L mm) | 29*118 | 17*121 | 16*86 | 13*75/100 |
| Tube Type | Conical bottom | Conical bottom | Round bottom | Small/Large blood collection tube |



Swing-out Rotor



Swing-out Rotor Block



| | |
|-------------------|------------------|
| BE No. | BE12FS001 |
| Max. RCF | 3488xg |
| Max. speed | 4000rpm |

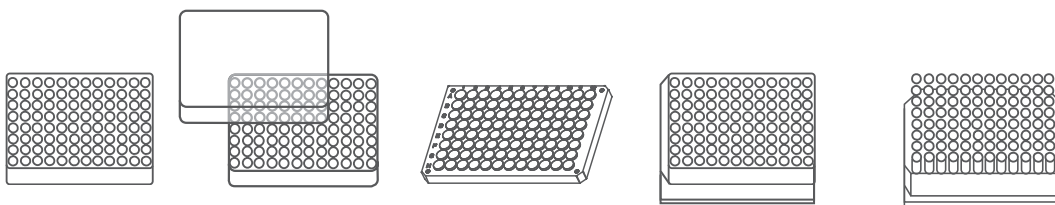


Rectangular Bucket (Sets of 4)



| | |
|---------------------|---------------------------------------|
| BE No. | BE12HC000 |
| Max. RCF | 3148xg |
| Max. speed | 4000rpm |
| Max Capacity | - |
| Bucket Type | Rectangular bottom Max height 60mm |

Plates for BE12HC000



| Plates per bucket/rotor | 4/16 | 3/12 | 3/12 | 1/4 | 1/4 |
|-------------------------|-------------------|----------------|-------------------|-------------|--------------|
| W*D*H (mm) | 128*86*15 | 128*86*17.5 | 128*86*20 | 128*86*44.5 | 128*86*60 |
| Plate Type | MTP (without lid) | MTP (with lid) | PCR plate 96-fold | DWP | Filter plate |





Your Haier Biomedical Partner

