

Benchtop High-Speed Refrigerated Centrifuge

LX-185T100R



Scope of Application :

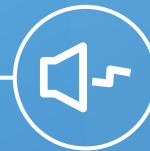
Mainly used for nucleic acid extraction, DNA/RNA separation, purification, virus separation and protein precipitation in the laboratory. Widely used in universities, third party testing organizations, disease prevention, medical and health, biological pharmaceutical and other related fields.



Wide range of rotors for application flexibility



Short pre-cooling time and precise temperature control performance



Optimized sound design for low noise levels ($\leq 52\text{dB(A)}$)

Qingdao Haier Biomedical Technology Co.,Ltd.

No.280 Feng Yuan Road, High-tech Zone,
Qingdao, 266109, P.R. China
E-mail: inquiry@haierbiomedical.com
Website: www.haiermedical.com



Haier Biomedical
International



Haier Biomedical
International



@haiermedicalint



Haier Biomedical
International



Haier Biomedical
International



Product Features



Wide range of rotors for application flexibility, compatible with tubes/bottles from 0.2 ml to 100ml



Short pre-cooling time and precise temperature control performance



Fast sample processing at maximum speeds of up to 18,500 rpm (30,130xg)



Use of brushless induction motors to provide maintenance-free operation, eliminating carbon particle emissions



Optimized sound design for low noise levels ($\leq 52\text{dB(A)}$)



Automatic radio-frequency rotor identification (RFID) with over speed protection



Each rotor use frequency monitoring to guarantee maximum operational safety



Real time loading imbalance detection, immediate shutdown protection in case of imbalance

Intuitive Interface



The 7-inch 45° glove-friendly touchscreen, the wide viewing angle more comfortable and practical for users of all heights



Further enhanced with access controls such as user login with password protection, the independent program data of each user is managed separately



Quick recall of up to 1000+ programs with alpha-numeric naming to minimize time between runs and for quick run start by routine users



The speed, centrifugal force, time and temperature can be changed by user during the centrifugation process



9 acceleration + 10 deceleration stages

The screenshot shows a 7-inch touchscreen interface with the following elements:

- Top Bar:** Status icons (Wi-Fi, notification, help), time (7:39PM 03 Jan 2011), and a 'Visitor Login' button.
- Control Panel:** A vertical column of five numbered buttons (1-5) for program selection, and a 'More' button at the bottom.
- Display Area:**
 - Acceleration/Deceleration setting: A triangular slider set to '2' on both sides.
 - Target speed/centrifugal force and real-time speed display: Shows '0 RPM', '18500 RPM/RCF', and a real-time speed of '4°C'.
 - Temperature set-point and real-time temperature display: Shows a set-point of '23°C' and a real-time temperature of '4°C'.
 - Time: Shows '00:00:00' and a duration of '00:20:00'.
 - Function buttons: Includes a snowflake icon for refrigeration, a double arrow for fast centrifugation, a play button for start, and a lid icon for lid status.

Annotations for the interface:

- Acceleration/Deceleration setting.
- Target speed/centrifugal force and real-time speed display.
- Temperature set-point and real-time temperature display.
- Quick access to stored programs. 1000+ program storage, supports customized programs for convenient.
- Clear one-touch buttons for fast refrigeration, fast centrifugation, intelligent start-stop and lid-closing status.



Product Parts



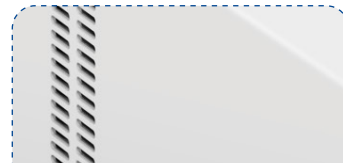
Intelligent lid locking monitoring and automatic self-locking to ensure safe operation



Motorized gas springs with safety protection



Drainage tray to prevent internal water accumulation and improve corrosion resistance



Triple-layer construction to ensure safe use



316 stainless steel centrifuge chamber is rust-free and easy to clean



Emergency lid release, pry out the white plastic plug on the side plate with a tool and pull the attached release cord at least 7 times to open the lid



USB port for exporting operation record including speed, time and temperature, operation curve with alarm messages etc

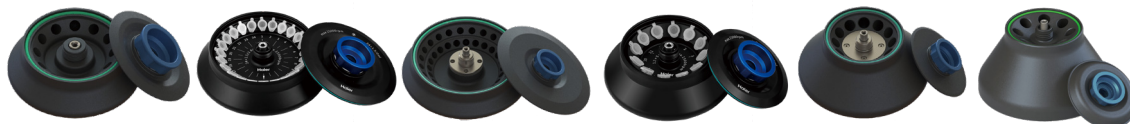
Specifications

Model	Maximum Capacity	Speed Range (rpm)	Max RCF(xg)	Speed Accuracy	Time Setting Range	Precooling Function	Temperature Setting Range(°C)	Display
LX-185T100R	4*100ml	500~18500	30130	±10rpm	1s~99h59m59s (1-second increment)	Yes	-20~40 adjustable to 1	7 inch touch screen

Cooling	Noise Level (dB(A))	Power Supply (V/Hz)	Power(W)	Exterior Dimensions (W*D*H)(mm)	Lid Opening Height(mm)	Net Weight (kg)	Packing Dimensions (W*D*H)(mm)	Gross Weight(kg)	Certifications
Direct Cooling	≤52	AC220/50/60	1200	420*680*330	860	57	508*806*528	73	CE



Fixed-Angle Rotor



BE No.	BE12DKZ00	BE12C6000	BE12CB000	BE12DJZ00	BE12CC000	BE12CA000
Type	Sealed	Sealed	Sealed	Sealed	Sealed	Sealed
Max Capacity	12*1.5/2ml	24*1.5/2ml	48*1.5/2ml	12*5ml	12*10ml	8*15ml
Max RCF (xg)	26019	30130	19083	18090	16071	13200
Max Speed (rpm)	18500	17500	13000	16000	12500	12000
Tubes per Rotor	12	24	48	12	12	8
Tube						
Max Tube Capacity (ml)	1.5/2ml	1.5/2ml	1.5/2ml	5ml	10ml	15ml
Max Tube Dimensions (Ø x L mm)	11*38	11*38	11*38	13.5*75	16*86	17*121
Tube Type	Round /Conical bottom	Round /Conical bottom	Round /Conical bottom	Round bottom	Round bottom	Conical bottom

*Haier Biomedical also can provide 0.2ml adapter (sets of 24) (BE12J2003),0.5ml adapter (sets of 24) (BE12JN002) for 1.5/2ml tube rotor



Fixed-Angle Rotor



BE No.	BE12CD000	BE12DD000	BE12DLZ00	BE12DPZ00	BE12DMZ00	BE12DNZ00
Type	Sealed	Sealed	Sealed	Steel sleeve	Steel sleeve	Steel sleeve
Max Capacity	6*50ml	6*50ml	12*8*0.2ml	18*15ml	6*50/15ml	6*100ml
Max RCF (xg)	15294	16421	18516	4749	3577	3348
Max Speed (rpm)	12000	12000	12000	5000	5000	4800
Tubes per Rotor	6	6	12	18	6 pcs(50ml) 6 pcs(15ml)	6
Tube						
Max Tube Capacity (ml)	50ml	50ml	0.2ml 8-strip PCR	15ml	50(15)ml	100ml
Max Tube Dimensions (Ø x L mm)	29*105	29*118	6*18	17*121	29*118 17*121	41*120
Tube Type	Round bottom	Conical bottom	PCR	Round /Conical bottom	Round /Conical bottom	Round bottom

Adapter(Sets of 6) for BE12DD000

BE No.	BE12JC002
Max Capacity	15ml
Tube	
Max Tube Dimensions (Ø x L mm)	17*121
Tube Type	Conical bottom



 **Swing-Out Rotor**



Swing-Out Rotor Block




BE No.	BE12FD001
Max. RCF	3322xg
Max. speed	4600rpm





Bucket (Sets of 4)



BE No.	BE12H1000
Max Capacity	5*10ml
Tubes per bucket/rotor	5/20
Tube	
Max Tube Dimensions (Ø x L mm)	15*105
Tube Type	Large blood collection tube

Adapter (Sets of 50) for BE12H1000

BE No.	BE12JN001
Max Capacity	5ml
Tube	
Max Tube Dimensions (Ø x L mm)	13*75
Tube Type	Small blood collection tube




Swing-Out Rotor Block




BE No.	BE12FD001
Max. RCF	3322xg
Max. speed	4600rpm



Bucket (Sets of 4)



BE No.	BE12H2000
Max Capacity	2*15ml
Tubes per bucket/rotor	2/8
Tube	
Max Tube Dimensions (Ø x L mm)	17*121
Tube Type	Conical bottom



Swing-Out Rotor



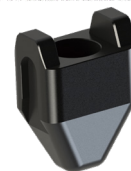
Swing-Out Rotor Block



BE No.	BE12FD001
Max. RCF	3322xg
Max. speed	4600rpm



Bucket (Sets of 4)



BE No.	BE12H3000
Max Capacity	50ml
Tubes per bucket/rotor	1/4
Tube	
Max Tube Dimensions (Ø x L mm)	29*118
Tube Type	Conical bottom



Swing-Out Rotor Block



BE No.	BE12FD001
Max. RCF	3322xg
Max. speed	4600rpm



Bucket (Sets of 4)



BE No.	BE12G7000	BE12J1004
Max Capacity	100ml	NA
Bucket Type	Flat bottom	NA

Adapter(Sets of 4) for BE12G7000



BE No.	BE12JU003	BE12JV003	BE12JW003	BE12JX003	BE12JY003	BE12JZ003	BE12J0004
Max Capacity	100ml	50ml	2*15ml	15ml	4*10ml	4*5/7ml	4*1.5/2ml
Tubes per adapter/rotor	1/4	1/4	2/8	1/4	4/16	4/16	4/16
Tube							
Max Tube Dimensions (Ø x L mm)	41*120	29*118	17*121	17*121	15*105	13*75/100	11*38
Tube Type	Round bottom	Conical bottom	Conical bottom	Conical bottom	Large blood collection tube	Small/Large blood collection tube	Round/Conical bottom



Swing-Out Rotor



Swing-Out Rotor Block



BD CPT tube bucket (sets of 4)



BE No.	BE12FD001
Max. RCF	3322xg
Max. speed	4600rpm



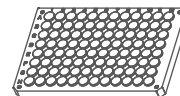
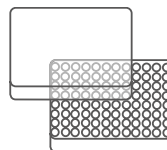
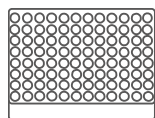
BE No.	BE12G6000
Max Capacity	8ml
Tubes per bucket/rotor	1/4
Tube	
Max Tube Dimensions (Ø x L mm)	16*130
Tube Type	Round bottom

BE No.	BE12FC001
Max. RCF	2287xg
Max. speed	4500rpm
Max Capacity	2 plates
Bucket Type	Rectangular bottom



Plate Swing-Out Rotor

Plates for BE12H5000



Plates per rotor	2	2	2
W*D*H (mm)	128*86*15	128*86*17.5	128*86*20
Plate Type	MTP (without lid)	MTP (with lid)	PCR plate 96-fold