

# Mini-Centrifuge



## Application

This product is used in micro centrifugal scenarios (single tube capacity is less than or equal to 2ml)

## Applicable Users

- PCR laboratory
- Scientific research biology laboratory in colleges and universities
- Public health and disease control
- Microbiological laboratory
- Chemistry and chemical laboratory
- Medical treatment and hospital testing room

### Qingdao Haier Biomedical Technology Co.,Ltd.

No.280 Feng Yuan Road, High-tech Zone,  
Qingdao, 266109, P.R. China  
E-mail: [inquiry@haierbiomedical.com](mailto:inquiry@haierbiomedical.com)  
Website: [www.haiermedical.com](http://www.haiermedical.com)



Haier Biomedical  
International



Haier Biomedical  
International



@haiermedicalint



Haier Biomedical  
International



Haier Biomedical  
International

## Product Advantages



LX-120T2Z



LX-50T2Z



### Quiet

Suspension with shock absorber reduces noise output



### Convenient

Simple and fast operation



### Small

Can be held in your hand



### Safe

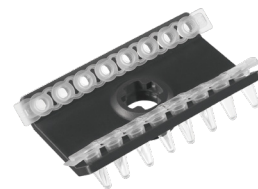
- Safety interlock lid with automatic shut-off if lid is open
- Anti vibration & absorption suction cup
- Splash and leak protection



## Specifications



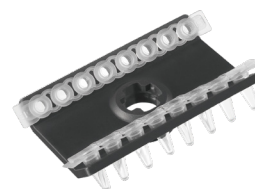
Model	LX-120T2Z	LX-50T2Z
Maximum Capacity	8*1.5/2 ml	8*1.5/2 ml
Max Speed (rpm)	12000	5000
Max RCF (xg)	7325	1270
Time Setting Range	10s-99m50s	-
Display	OLED	-
Noise (dB(A))	≤50	≤40
Power Supply (V/Hz)	100-240/50/60	100-240/50/60
Power (W)	35	25
Exterior Dimensions (W*D*H)(mm)	152*142*122	152*142*122
Net Weight (kg)	1.2	1.2
Packing Dimensions (W*D*H)(mm)	265*205*200	265*205*200
Gross Weight (kg)	3	3



## LX-120T2Z Rotor List



Type	Fixed-Angle Rotor	Fixed-Angle Rotor
Max Capacity	8*1.5/2 ml	2*8*0.2 ml
Max RCF (xg)	7325	6225
Max Speed (rpm)	12000	12000
Tubes per Rotor	8	2
Tube		
Max Tube Capacity(ml)	1.5/2	0.2 8-strip PCR
Max Tube Dimension (Ø x L mm)	11*38	6*18
Tube Type	Round/Conical bottom	PCR



## LX-50T2Z Rotor List



Type	Fixed-Angle Rotor	Fixed-Angle Rotor
Max Capacity	8*1.5/2 ml	2*8*0.2 ml
Max RCF (xg)	1270	1150
Max Speed (rpm)	5000	5000
Tubes per Rotor	8	2
Tube		
Max Tube Capacity (ml)	1.5/2	0.2 8-strip PCR
Max Tube Dimension (Ø x L mm)	11*38	6*18
Tube Type	Round/Conical bottom	PCR

Adapter (Sets of 24 ) for 1.5/2ml Fixed-angle rotor



BE No.	BE12J2003	BE12JN002
Max Capacity	0.2ml	0.5ml
Tube		
Max Tube Dimensions (Ø x L mm)	6.3*23	8*35
Tube Type	Conical bottom	Conical bottom