

Benchtop Multipurpose Refrigerated Centrifuge

LX-155T500R



Scope of Application

Designed for general-purpose application, it is frequently used in microbiology, molecular biology, pharmacology, genetics, bioproduction, cell culture, clinical diagnostics, and transfusion facilities and applied for cell culturing, nucleic acid purification, blood component separation, protein concentration DNA/RNA/plasmid extraction and others.



Optimized sound design for low noise levels ($\leq 55\text{dB(A)}$)



Short pre-cooling time and precise temperature control performance



Real time loading imbalance detection, immediate shutdown protection in case of imbalance

Qingdao Haier Biomedical Technology Co.,Ltd.

No.280 Feng Yuan Road, High-tech Zone,
Qingdao, 266109, P.R. China
E-mail: inquiry@haierbiomedical.com
Website: www.haiermedical.com



Haier Biomedical
International



Haier Biomedical
International



@haiermedicalint



Haier Biomedical
International



Haier Biomedical
International



Product Features



Short pre-cooling time and precise temperature control performance



Optimized sound design for low noise levels ($\leq 55\text{dB(A)}$)



Wide range of rotors for application flexibility, compatible with tubes/bottles from 0.2 ml to 500ml



Automatic radio-frequency rotor identification (RFID) with over speed protection



Use of brushless induction motors to provide maintenance-free operation, eliminating carbon particle emissions



Real time loading imbalance detection, immediate shutdown protection in case of imbalance



ECO shut-off function reduce energy consumption and extend compressor life



Each rotor use frequency monitoring to guarantee maximum operational safety

Intuitive Interface



The 7-inch 45° glove-friendly touchscreen, the wide viewing angle more comfortable and practical for users of all heights



Equipped with user login and password protection, ensuring individualized program data management for each user



Quick recall feature for over 1000+ programs, minimizing time between runs and facilitating quick starts for routine users



The speed, centrifugal force, time and temperature can be changed by user during the centrifugation process



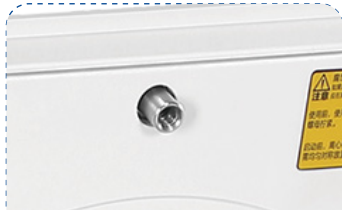
9 acceleration+ 10 deceleration stages

The screenshot shows the main control interface with the following callouts:

- Acceleration/Deceleration setting:** Points to the top bar showing '9' on both sides of a central triangle.
- Target speed/centrifugal force and real-time speed display:** Points to the large digital display showing '0 RPM' and '15500 RPM/RCF'.
- Temperature set-point and real-time temperature display:** Points to the display showing '23°C' and '4°C'.
- Quick access to stored programs:** Points to a vertical list of program buttons numbered 1 through 5, plus a 'More' button.
- Clear one-touch buttons:** Points to a row of four icons: a snowflake (refrigeration), a double arrow (fast centrifugation), a play button (start), and a lid icon (lid-closing status).



Product Parts



Intelligent lid locking monitoring and automatic self-locking to ensure safe operation



Triple-layer construction to ensure safe use



Motorized gas springs with safety protection



316 stainless steel centrifuge chamber is rust-free and easy to clean



Drainage tray to prevent internal water accumulation and improve corrosion resistance



Emergency lid release, pry out the white plastic plug on the side plate with a tool and pull the attached release cord at least 7 times to open the lid



USB port for exporting operation record including speed, time and temperature, operation curve with alarm messages etc

Key Features of Quick-Flip Biocontainment Safety Lids

- ⊙ **Quick-Flip Hinge Design**
Our hinged lids do not need to be removed from the rotor. Just a quick flip gives you fast access to your samples
- ⊙ **Low-Pressure Closing Clip**
The simple low-pressure clip offers a secure closure with an audible "click" and visual cues, enhancing safety and replacing multi-turn screw caps or complex lever systems
- ⊙ **Ambidextrous & Glove-Friendly**
Designed for ease of use, our lids can be operated with either hand and are glove-friendly, ensuring seamless operation
- ⊙ **Premium Polymer Construction**
Made from Polyetherimide (PEI), our lids provide excellent chemical resistance, transparency, and durability
- ⊙ **Certified Safety and Reliability**
Independently tested and certified per IEC-61010 Section 2-020 Annex AA, ensuring top-level safety and performance



Choose our Quick-Flip biocontainment safety lids for innovative, safe, and durable lab solutions.



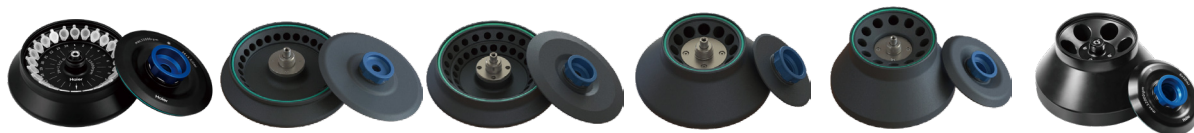
Specifications

Model	Maximum Capacity	Speed Range (rpm)	Max RCF(xg)	Speed Accuracy	Time Setting Range	Precooling Function	Temperature Setting Range(°C)	Display
LX-155T500R	4*500ml	500~15500	26322	±10rpm	1s~99h59m59s (1-second increment)	Yes	-20~40, adjustable to 1	7 inch touch screen

Cooling	Noise Level (dB(A))	Power Supply (V/Hz)	Power(W)	Exterior Dimensions (W*D*H)(mm)	Lid Opening Height(mm)	Net Weight (kg)	Packing Dimensions (W*D*H)(mm)	Gross Weight(kg)	Certifications
Direct Cooling	≤55	AC220/50/60	1200	658*673*358	860	112	741*799*555	133	CE



Fixed-Angle Rotor




BE No.	BE12C9000	BE12CE000	BE12C7000	BE12DS000	BE12DT000	BE12DU000
Type	Sealed	Sealed	Sealed	Sealed	Sealed	Sealed
Max Capacity	24*1.5/2ml	30*1.5/2ml	48*1.5/2ml	12*10ml	12*15ml	6*50ml
Max RCF (xg)	23100	26322	22132	16071	21912	17065
Max Speed (rpm)	15500	15500	14000	12500	14000	12000
Max Tubes Per Rotor	24	30	48	12	12	6
Tube						
Max Tube Capacity (ml)	1.5/2ml	1.5/2ml	1.5/2ml	10ml	15ml	50ml
Max Tube Dimensions (∅ x L mm)	11*38	11*38	11*38	16*86	17*121	29 *105
Tube Type	Round /Conical bottom	Round /Conical bottom	Round /Conical bottom	Round bottom	Conical bottom	Round bottom


*Haier Biomedical also can provide 0.2ml adapter (sets of 24) (BE12J2003),0.5ml adapter (sets of 24) (BE12JN002) for 1.5/2ml tube rotor

Fixed-Angle Rotor



BE No.	BE12DB000	BE12E5000	BE12DF000	BE12DG000	BE12DE000
Type	Sealed	Sealed	Steel sleeves	Steel sleeves	Steel sleeves
Max Capacity	6*50ml	12*8*0.2ml	42*15ml	12*50(15)ml	10*100ml
Max RCF (xg)	16421	14892	4472	4640	3350
Max Speed (rpm)	12000	12000	5000	5000	4500
Max Tubes Per Rotor	6	12	42	12pcs(50ml) 12pcs(15ml)	10
Tube					
Max Tube Capacity (ml)	50ml	0.2 ml 8-strip PCR	15ml	50(15)ml	100ml
Max Tube Dimensions (Ø x L mm)	29*118	6*18	17*121	29*118 17*121	41*120
Tube Type	Conical bottom	PCR	Round/Conical bottom	Round/Conical bottom	Round bottom

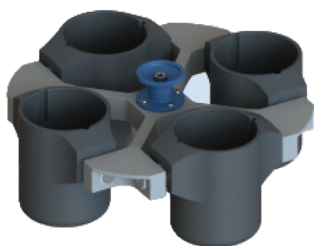
Adapter(Sets of 6) for BE12DB000

BE No.	BE12JC002
Max Capacity	15ml
Tube	
Max Tube Dimensions (Ø x L mm)	17*121
Tube Type	Conical bottom





Swing-Out Rotor



Swing-Out Rotor with Round Buckets

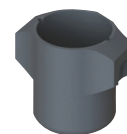
Swing-Out Rotor Block



BE No.	BE12FJ001
Max. RCF	3220xg
Max. speed	4000rpm



Round Bucket (Sets of 4)



BE No.	BE12G0000
Max Capacity	500ml
Bucket Type	Flat bottom



Swing-Out Rotor with Biocontainment Round Buckets

Swing-Out Rotor Block



BE No.	BE12FJ001
Max. RCF	3220xg
Max. speed	4000rpm



Round Bucket & Lid (Sets of 4)



BE No.	BE12G8000	BE12J2004
Max Capacity	500ml	NA
Bucket Type	Flat bottom	NA

Adapter (Sets of 4) for BE12G0000, BE12G8000



BE No.	No Adapter Needed	BE12JP001	BE12FG001	BE12FF001	BE12JS001
Max Capacity	500ml	250ml	225ml	100ml	4*50ml
Tubes Per Adapter/Rotor	4	1/4	1/4	1/4	4/16
Tube					
Max Tube Dimensions (Ø x L mm)	80*136	62*123	60*136	38*120	29*118
Tube Type	Flat bottom	Flat bottom	Conical bottom	Round bottom	Conical bottom



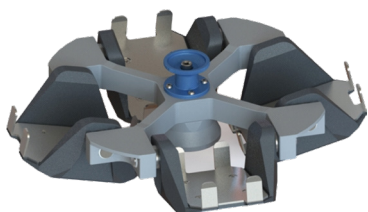
Swing-Out Rotor

Adapter (Sets of 4)
for BE12G0000, BE12G8000



BE No.	BE12JR001	BE12JQ001	BE12JD002	BE12JE002
Max Capacity	10*15ml	14*10ml	19*5/7ml	30*1.5/2ml
Tubes Per Adapter/Rotor	10/40	14/56	19/76	30/120
Tube				
Maximum Tube Dimensions (Ø x L mm)	17*121	15*105	13*75/100	11*38
Tube Type	Conical bottom	Large blood collection tube	Small/Large blood collection tube	Round/Conical bottom

*Haier Biomedical also can provide 0.2ml adapter (sets of 24) (BE12J2003), 0.5ml adapter (sets of 24) (BE12JN002) for 1.5/2ml tube rotor



Swing-Out Rotor with Plate Buckets

Swing-Out Rotor Block



BE No. **BE12FJ001**

Max. RCF 2612xg

Max. speed 4000rpm

Plate Bucket (Sets of 4)

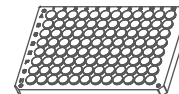
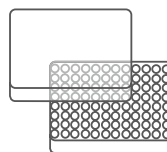
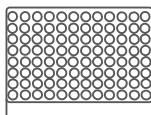


BE No. **BE12H5000**

Max Capacity 1 plate

Bucket Type Rectangular bottom

Plates for BE12H5000



Plates per rotor	4	4	4
W*D*H (mm)	128*86*15	128*86*17.5	128*86*20
Plate Type	MTP (without lid)	MTP (with lid)	PCR plate 96-fold