

Benchtop Low-Speed Centrifuge

Scope of Application:

Specifically designed for routine clinical and life science applications, mainly used for separating whole blood or blood components of human origin and cell collection etc.



LX-60T100-J

Qingdao Haier Biomedical Technology Co.,Ltd.

No.280 Feng Yuan Road, High-tech Zone,
Qingdao, 266109, P.R. China
E-mail: inquiry@haierbiomedical.com
Website: www.haiermedical.com



Haier Biomedical
International



Haier Biomedical
International



@haiermedicalint



Haier Biomedical
International



Haier Biomedical
International



Product Features



Offer a compact footprint and compatible with 5ml, 10ml, 15ml, 50ml or 100ml sample tube, small and large blood collection tubes



Use of brushless induction motors to provide maintenance-free operation, eliminating carbon particle emissions



Optimized sound design for low noise levels ($\leq 56\text{dB(A)}$)



Automatic rotor identification with over speed protection



Real time loading imbalance detection, immediate shutdown protection in case of imbalance



Each rotor use frequency monitoring to guarantee maximum operational safety

Intuitive Interface



LED keypad and control knob for easy operation, the wide viewing angle more comfortable and practical for users of all heights.



Quick recall of up to 99 programs for quick run start by routine users



9 acceleration + 10 deceleration stages



The speed, centrifugal force, time and temperature can be changed by user during the centrifugation process.



Target speed/centrifugal force/time and real-time operation data display

Screen lock function to prevent press errors

One key to recall stored programs for more convenient operation

Acceleration/Deceleration rates



Product Parts



Patented anti-seismic door lock. In case of abnormal vibration, the cover can be locked reliably



Unique air duct structure design, the heat inside the centrifugal chamber can dissipate quickly



Motorized gas springs with safety protection



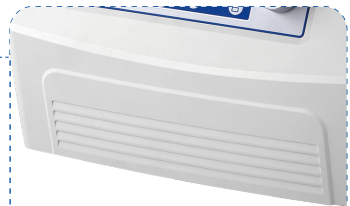
316 stainless steel centrifuge chamber is rust-free and easy to clean



USB port for exporting operation record including speed, time and temperature, operation curve with alarm messages etc



Emergency lid release, pry out the white plastic plug on the side plate with a tool and pull the attached release cord to open the lid



Triple-layer construction to ensure safe use

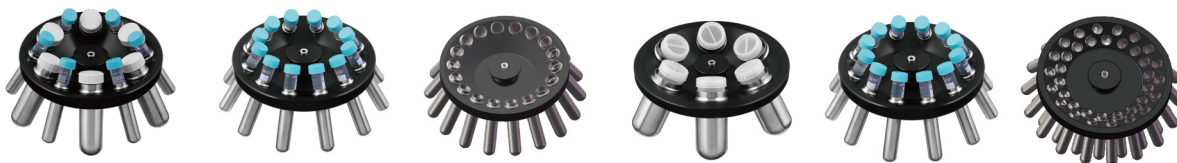
Specifications

Model	Maximum Capacity	Speed Range (rpm)	Max RCF(xg)	Speed Accuracy	Time Setting Range	Display	Noise Level (dB(A))	Power Supply
LX-60T100-J	6*100ml	500-6000	4749	±10rpm	1s~99h59m59s (1-second increment)	LED	≤56	AC220V 50/60HZ

Power(W)	Exterior Dimensions (W*D*H)(mm)	Lid Opening Height (mm)	Net Weight (kg)	Packing Dimensions (W*D*H)(mm)	Gross Weight (kg)	Certifications
150	340*447*281	627	25	441*544*421	28	CE



Fixed-Angle Rotor



BE No.	BE11D6000	BE11D5000	BE11DT000	BE11D7000	BE12D6000	BE11DU000
Type	Steel sleeve	Steel sleeve	Steel sleeve	Steel sleeve	Steel sleeve	Steel sleeve
Max Capacity	6*50(15)ml	12*15ml	18*15ml	6*100ml	12*10ml	36*10ml
Max RCF (xg)	3578	4749	3578	3349	2683	2465
Max Speed (rpm)	5000	6000	5000	4800	5000	4200
Max Tubes Per Rotor	6 pcs(50ml) 6 pcs(15ml)	12	18	6	12	36
Tube						
Max Tube Capacity (ml)	50 (15)ml	15ml	15ml	100ml	10ml	10ml
Max Tube Dimensions (Ø x L mm)	29*118 17*121	17*121	17*121	41*120	15*105	15*105
Tube Type	Round/Conical bottom	Round/Conical bottom	Round/Conical bottom	Round bottom	Large blood collection tube	Large blood collection tube

Adapter(Sets of 50) for BE12D6000, BE11DU000

BE No.	BE12JN001
Max Capacity (ml)	5ml
Tube	
Max Tube Dimensions (Ø x L mm)	13*75
Tube Type	Small blood collection tube





Swing-Out Rotor



Swing-Out Rotor Block

BE No.	BE12F2001
Max. RCF	2770xg
Max. speed	4200rpm



Bucket (Sets of 4)



BE No.	BE12H8000
Max Capacity	1*15ml 2*10ml 2*5ml
Tubes per bucket/rotor	15ml(1/4), 10ml(2/8) 5ml(2/8)
Tube	
Max Tube Dimensions (Ø x L mm)	17*121 16*86 13*75
Tube Type	15ml(Conical bottom) 10ml/5ml(Round bottom)



Swing-Out Rotor Block

BE No.	BE12F2001
Max. RCF	2770xg
Max. speed	4200rpm



Bucket (Sets of 4)



BE No.	BE12H1000
Max Capacity	5*10ml
Tubes per bucket/rotor	5/20
Tube	
Max Tube Dimensions (Ø x L mm)	15*105
Tube Type	Large blood collection tube

Adapter(Sets of 50) for BE12H1000

BE No.	BE12JN001
Max Capacity (ml)	5ml
Tube	
Max Tube Dimensions (Ø x L mm)	13*75
Tube Type	Small blood collection tube





Swing-Out Rotor



Swing-Out Rotor Block



BE No.	BE12F2001
Max. RCF	2770xg
Max. speed	4200rpm



Bucket (Sets of 4)



BE No.	BE12H2000
Max Capacity	2*15ml
Tubes per bucket/rotor	2/8
Tube	
Max Tube Dimensions (Ø x L mm)	17*121
Tube Type	Conical bottom



Swing-Out Rotor Block



BE No.	BE12F2001
Max. RCF	2770xg
Max. speed	4200rpm



Bucket (Sets of 4)



BE No.	BE12H3000
Max Capacity	50ml
Tubes per bucket/rotor	1/4
Tube	
Max Tube Dimensions (Ø x L mm)	29*118
Tube Type	Conical bottom

 **Swing-Out Rotor**

BE No.	BE12F3001
Max. RCF	2130xg
Max. speed	4200rpm
Max Capacity	2 plates
Bucket Type	Rectangular bottom

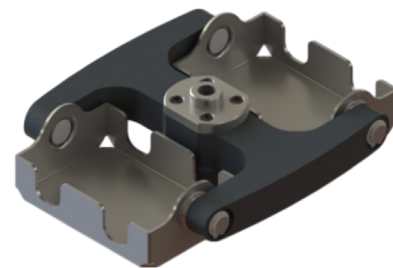
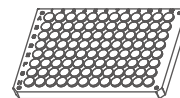
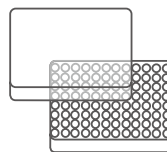
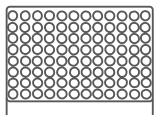


Plate Swing-Out Rotor

Plates for
BE12H5000



Plates per rotor	2	2	2
W*D*H (mm)	128*86*15	128*86*17.5	128*86*20
Plate Type	MTP (without lid)	MTP (with lid)	PCR plate 96-fold