

Centrifuge Catalogue



Qingdao Haier Biomedical Technology Co.,Ltd.

No.280 Feng Yuan Road, High-tech Zone,
Qingdao, 266109, P.R. China
E-mail: inquiry@haierbiomedical.com
Website: www.haierbiomedical.com



Haier Biomedical
International



Haier Biomedical
International



@haiermedicalint



Haier Biomedical
International



Haier Biomedical
International

Note: If a slight difference occurs between pictures and actual products, please refer to actual products. Our company reserves the right of final interpretation of this brochure, please contact us for any further information if required.

CONTENT

Floor-Standing Low-Speed Refrigerated Centrifuge **01**
LX-75L2400R

Benchtop Multipurpose Refrigerated Centrifuge **11**
LX-155T500R

Benchtop High-Speed Refrigerated Centrifuge **19**
LX-185T100R

Benchtop High-speed Refrigerated Microcentrifuge **29**
LX-165T2R





Benchtop High-speed Microcentrifuge **33**
LX-165T2-J

Benchtop Low-speed Centrifuge **37**
LX-60T100-J

Benchtop Low-speed Large-capacity Centrifuge **45**
LX-60T500-J

Mini-Centrifuge **55**
LX-120T2Z / 50T2Z

Centrifuge Consumables **59**

Model	Max capacity	Max speed(rpm)	Max RCF(xg)	Refrigerated	Page
 LX-75L2400R	8*2000ml or 16*500ml blood bag	7500	13376	Y	01
 LX-155T500R	4*500ml	15500	26322	Y	11
 LX-185T100R	4*100ml	18500	30130	Y	19
 LX-165T2R	12*10ml	16500	25872	Y	29

Model	Max capacity	Max speed(rpm)	Max RCF(xg)	Refrigerated	Page
 LX-165T2-J	12*5ml	16500	25872	N	33
 LX-60T100-J	6*100ml	6000	4749	N	37
 LX-60T500-J	4*500ml	6000	5353	N	45
 LX-120T2Z	8*1.5/2ml	12000	7325	N	55
 LX-50T2Z	8*1.5/2ml	5000	1270	N	55



Floor-Standing Low-Speed Refrigerated Centrifuge



LX-75L2400R

Advanced Centrifugation Solutions for Modern Blood Banking

Step into a realm of unmatched convenience with the Haier Biomedical LX-75L2400R Blood Banking Centrifuge, tailored to exceed the demanding needs of blood bank centrifugation. Redefine efficiency as the LX-75L2400R effortlessly accommodates up to 16 x 500 ml blood bags or 6 x 2400 ml centrifuge bottles, delivering optimal sedimentation results with each run.

Elevate your laboratory's capabilities with the LX-75L2400R's extensive rotor options, its formidable motor, and user-friendly control panel, all complemented by a robust refrigeration system and an array of versatile accessories.

Crafted for excellence, the LX-75L2400R is the centrifuge of choice for blood banks and transfusion centers. Its superior design also finds extensive application in the forefront of biopharmaceuticals, cell therapy, biological culture, vaccine production, and academic research, making it a pivotal tool in diverse scientific fields.

Excellent Performance

Unlock the full potential of your blood processing center with the LX-75L2400R's expansive capacity and cutting-edge selection of rotors, carriers, and adapters, masterfully designed to handle a diverse array of high-capacity applications. This powerhouse is the epitome of versatility, perfect for sophisticated bioprocessing, clinical diagnostics, and comprehensive blood sample preparation.

Quiet yet powerful, the LX-75L2400R redefines operational convenience, setting a new standard in the industry. At its heart lies a microprocessor-controlled frequency motor, delivering robust torque and rapid acceleration, all while ensuring an extended motor lifespan. Achieve peak performance with speeds soaring up to 7,500 rpm and forces reaching 13,376 x g, propelling your research to new heights with unmatched precision and reliability



Expansive Memory

Maximize efficiency with over 1000 program memories, ready to streamline your workflow.



Rapid Cooling

Achieve 4°C in just 15 minutes from room temperature, speeding up your readiness.



Quiet Operation

Work in peace with a sound design that keeps noise levels below 65 dB, even at maximum speed.



Precise Control

Tailor your operations with 10 acceleration and deceleration stages for unparalleled precision.



Maintenance-Free Motor

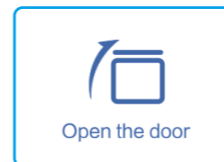
Enjoy seamless operation with our brushless induction motor that requires no maintenance and ensures a clean lab environment.



Stability

Trust in the stability of our low-center-of-gravity design for consistent performance and optimal centrifugal results.

Ergonomic Design



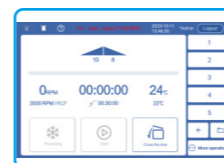
One-Touch Automation

Experience unparalleled convenience with our one-button automatic door mechanism that seamlessly opens and closes from front to back, ensuring quick and easy access while maintaining sterility standards.



Automated Rotor Lid Management

With our centrifuge, the rotor lid opens and closes automatically, complete with lid storage, reducing manual effort and enhancing workflow efficiency.



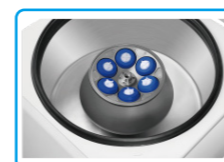
Intuitive 10-Inch Touch Screen

The expansive 10-inch touch screen interface provides operators with user-friendly navigation through settings and features, making operation straightforward and minimizing training time.



Motorized Gas Springs

Engineered for safety, the motorized gas springs offer smooth and controlled opening and closing of the centrifuge chamber, providing an extra layer of protection to users.



316 Stainless Steel Chamber

The premium 316 stainless steel construction of the centrifuge chamber ensures a rust-free and contaminant-resistant environment that is exceptionally easy to clean and maintain.



Versatile Rotor Capacity

Our centrifuge accommodates a variety of research needs with three rotors designed for 250ml, 500ml, 1000ml, 2000ml, and 2400ml centrifuge bottles, as well as 500ml blood bags, maximizing your laboratory's throughput capabilities.



Emergency Lid Release

The lid can be opened by utilizing the reset hole on the side plate. Rotate a 5mm hex key clockwise several times to open the lid.

Interactive 10-inch LCD Touchscreen

Glove-Friendly and Ergonomic
The 45°angled, glove-friendly touchscreen offers a wide viewing angle, making it comfortable and practical for users of all heights.

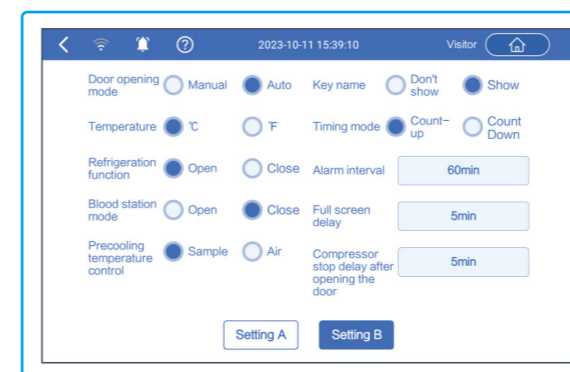
Enhanced Access Controls
Equipped with user login and password protection, ensuring individualized program data management for each user.

Visibility and Monitoring
Enlarged track bar display of set and actual run conditions during centrifugation, ensuring clear visibility from a distance.

Program Recall and Efficiency
Quick recall feature for over 1000+ programs with alpha-numeric naming, minimizing time between runs and facilitating quick starts for routine users.

Adjustable On-the-Fly
Users can alter speed, centrifugal force, time, and temperature during the centrifugation process for precise control.

Multiple operation setting modes, including unique blood bank mode function, convenient for blood bank users to use.



Multi-echelon program running mode, achieving continuous operation of multiple speed steps for special users



Acceleration/deceleration stages

Progress bar

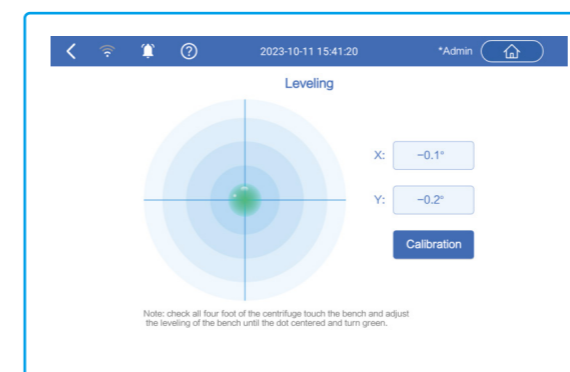
Target speed/centrifugal force and real-time speed display.

Temperature set-point and real-time temperature display.

Quick access to stored programs. 1000+ program storage, supports customized programs for convenient.

Clear one-touch buttons for fast refrigeration, fast centrifugation, intelligent start-stop and lid-closing status.


Electronic level assists in installation and leveling, making installation easier and simpler





The operation record including speed, time and temperature, operation curve with alarm messages etc. can be tracked on the screen and exported by USB port

Time	Warning	User
2023-10-10 15:33:50	*Load imbalance alarm	Visitor
2023-10-09 17:19:28	*Abnormal alarm of inverter (13)	Visitor
2023-10-09 17:19:06	*Abnormal alarm of inverter (13)	Visitor
2023-10-09 16:40:14	*Abnormal alarm of inverter (44)	Visitor
2023-10-09 16:40:11	*Ambient temperature sensor error	Visitor
2023-10-09 16:39:37	*Abnormal alarm of inverter (33)	Visitor
2023-10-09 16:39:28	*Ambient temperature sensor error	Visitor

Enhanced Safety


- 

Immediate Imbalance Detection & Shutdown
Offers real-time loading imbalance detection with instant shutdown to protect against imbalances.
- 

Stable Installation
Φ 120mm adjustable feet ensure the centrifuge is securely and stably installed in any setting.
- 

Comprehensive Alarm System
Features a multi-faceted alarm system for abnormal voltage, high temperature, overspeed, load imbalance, rotor absence, brake anomalies, and rotor life.
- 

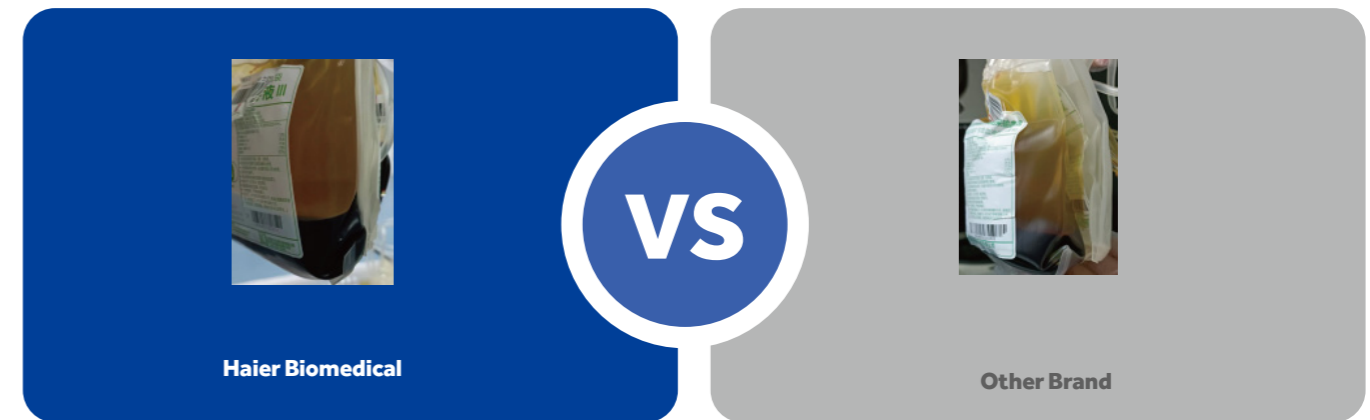
Anti-Vibration Lid Lock
Prevents accidental opening during operation, ensuring sample integrity and operator safety.
- 

Robust Construction
Fully covered steel plate protective sleeve and a 12mm steel shell provide enhanced durability and user safety.
- 

High-Quality Connectivity
Equipped with an imported 5-core aviation plug for easy, fast, and safe usage.

Real - World Efficacy

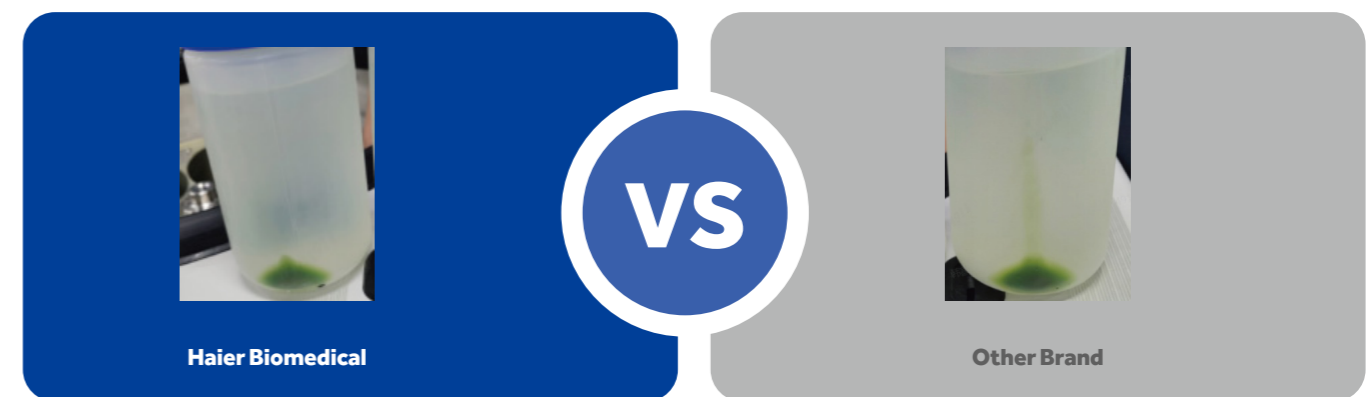
Blood Station User: Blood centrifugal test



Precision Layering

Clear Separation with Distinct Leukocyte Layer, Eliminating the Need for Re-Separation

Scientific Research User: Seaweed centrifugal test



Optimal Centrifugation

Clear Layering, High Yield, and Zero Wall Adhesion

Technical Data

Model	LX-75L2400R
Maximum Capacity	8*2000ml
Max Speed (rpm)	7500
Max RCF(xg)	13376
Speed Accuracy	±10rpm
Time Setting Range	1min-99h59m59s (1-second increment)
Precooling Function	Yes
Temperature Setting Range	-20°C-40°C, adjustment increment: 1°C
Display	10 inch touch screen
Cooling	Direct Cooling
Noise (dB(A))	≤65
Power Supply	3-400V 50/60Hz
Power (W)	6400
Exterior Dimensions (W*D*H)(mm)	900*1050*1020
Lid Opening Height (mm)	1780
Net Weight (kg)	670
Packing Dimensions (W*D*H)(mm)	1092*1279*1720
Gross Weight (kg)	750
Other Functions	Rotation speed/RCF switchover, inching operation, running process indicator, sound alert, adjustable acceleration/deceleration, user logging, user lock-out, automatic door opening, on-screen display for imbalance, over temperature, stainless steel chamber
Certification	CE

Fixed-angle Rotor



BE No.	BE12DC000	BE12JP002	BE12JQ002	BE12K1000
Type	Fixed-angle rotor (Sealed)	Adapter (Sets of 6) for BE12DC000	Adapter (Sets of 6) for BE12DC000	Centrifuge Bottle(Sets of 6) for BE12DC000
Max Capacity	6*1000ml	500ml	250ml	1000ml
Max RCF	13376xg	-	-	-
Max Speed	7500rpm	-	-	-
Max Bottle Capacity	1000ml	500ml	250ml	-
Bottles Per Rotor	6	6	6	-
Bottle Type	Flat bottom	Flat bottom	Flat bottom	-

Swing-out Rotor



Swing-out Rotor
12 blood bag

Swing-out Rotor Block



BE No.	BE12F5001
Max. RCF	5331xg
Max. speed	4000rpm



Bucket (Sets of 6)



BE No.	BE12H4000
Max Capacity	2400ml
Bucket Type	Flat bottom

Adapter/Bottle(Sets of 6) for BE12H4000



BE No.	BE12JT001	BE12K0000
Type	Double blood bag adapter	Centrifuge bottle
Max Capacity	2*500ml blood bag	2400ml
Blood bags/Bottles per rotor	12 blood bags	6 bottles



Swing-out Rotor
16 blood bag

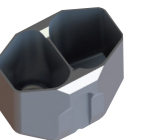
Swing-out Rotor Block



BE No.	BE12FP001
Max. RCF	5331xg
Max. speed	4000rpm



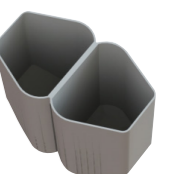
Double blood bag Bucket (Sets of 8)



BE No.	BE12H9000
Max Capacity	2*500ml
Bucket Type	Flat bottom

Adapter(Sets of 8) for BE12H9000

BE No.	BE12JF002
Type	Double blood bag adapter
Max Capacity	2*500ml blood bag
Blood bags per rotor	16



Benchtop Multipurpose Refrigerated Centrifuge

Scope of Application

Designed for general-purpose application, it is frequently used in microbiology, molecular biology, pharmacology, genetics, bioproduction, cell culture, clinical diagnostics, and transfusion facilities and applied for cell culturing, nucleic acid purification, blood component separation, protein concentration DNA/RNA/plasmid extraction and others.



LX-155T500R



Product Features



Short pre-cooling time and precise temperature control performance



Optimized sound design for low noise levels ($\leq 55\text{dB(A)}$)



Wide range of rotors for application flexibility, compatible with tubes/bottles from 0.2 ml to 500ml



Automatic radio-frequency rotor identification (RFID) with over speed protection



Use of brushless induction motors to provide maintenance-free operation, eliminating carbon particle emissions



Real time loading imbalance detection, immediate shutdown protection in case of imbalance





ECO shut-off function reduce energy consumption and extend compressor life





Each rotor use frequency monitoring to guarantee maximum operational safety

Intuitive Interface

 The 7-inch 45°glove-friendly touchscreen, the wide viewing angle more comfortable and practical for users of all heights

 Equipped with user login and password protection, ensuring individualized program data management for each user

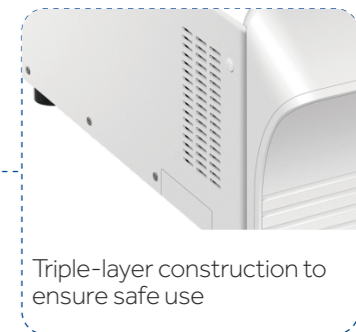
 Quick recall feature for over 1000+ programs, minimizing time between runs and facilitating quick starts for routine users

 The speed, centrifugal force, time and temperature can be changed by user during the centrifugation process

 9 acceleration+ 10 deceleration stages

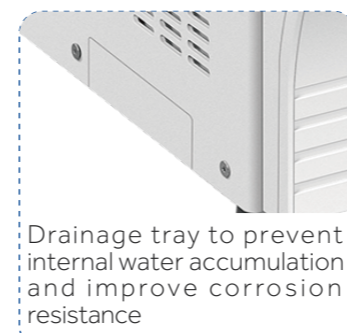
Product Parts

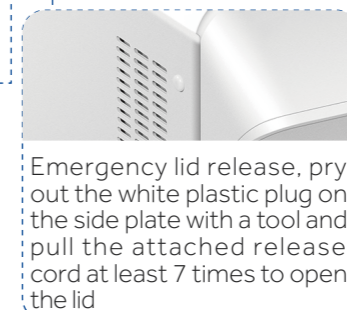
 Intelligent lid locking monitoring and automatic self-locking to ensure safe operation

 Triple-layer construction to ensure safe use

 Motorized gas springs with safety protection

 316 stainless steel centrifuge chamber is rust-free and easy to clean

 Drainage tray to prevent internal water accumulation and improve corrosion resistance

 Emergency lid release, pry out the white plastic plug on the side plate with a tool and pull the attached release cord at least 7 times to open the lid

 USB port for exporting operation record including speed, time and temperature, operation curve with alarm messages etc



Acceleration/Deceleration setting.

Target speed/centrifugal force and real-time speed display.

Temperature set-point and real-time temperature display.

Quick access to stored programs. 1000+ program storage, supports customized programs for convenient.

Clear one-touch buttons for fast refrigeration, fast centrifugation, intelligent start-stop and lid-closing status.

Key Features of Quick-Flip Biocontainment Safety Lids

- Quick-Flip Hinge Design**
 Our hinged lids do not need to be removed from the rotor. Just a quick flip gives you fast access to your samples
- Low-Pressure Closing Clip**
 The simple low-pressure clip offers a secure closure with an audible "click" and visual cues, enhancing safety and replacing multi-turn screw caps or complex lever systems
- Ambidextrous & Glove-Friendly**
 Designed for ease of use, our lids can be operated with either hand and are glove-friendly, ensuring seamless operation
- Premium Polymer Construction**
 Made from Polyetherimide (PEI), our lids provide excellent chemical resistance, transparency, and durability
- Certified Safety and Reliability**
 Independently tested and certified per IEC-61010 Section 2-020 Annex AA, ensuring top-level safety and performance

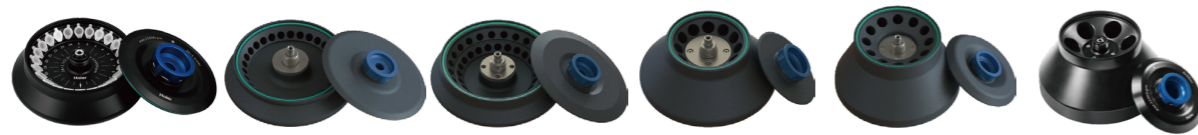


Choose our Quick-Flip biocontainment safety lids for innovative, safe, and durable lab solutions.

Specifications

Model	Maximum Capacity	Speed Range (rpm)	Max RCF(xg)	Speed Accuracy	Time Setting Range	Precooling Function	Temperature Setting Range(°C)	Display	
LX-155T500R	4*500 ml	500~15500	26322	±10rpm	1s-99h59m59s (1-second increment)	Yes	-20~40 adjustable to 1	7 inch touch screen	
Cooling	Noise Level dB(A)	Power Supply (V/Hz)	Power(W)	Exterior Dimensions (W*D*H)(mm)	Lid Opening Height(mm)	Net Weight (kg)	Packing Dimensions (W*D*H)(mm)	Gross Weight(kg)	Certifications
Direct Cooling	≤55	AC220/50/60	1200	658*673*358	860	112	741*799*555	133	CE

Fixed-angle Rotor



BE No.	BE12C9000	BE12CE000	BE12C7000	BE12DS000	BE12DT000	BE12DU000
Type	Sealed	Sealed	Sealed	Sealed	Sealed	Sealed
Max Capacity	24*1.5/2ml	30*1.5/2ml	48*1.5/2ml	12*10ml	12*15ml	6*50ml
Max RCF (xg)	23100	26322	22132	16071	21912	17065
Max Speed (rpm)	15500	15500	14000	12500	14000	12000
Max Tubes Per Rotor	24	30	48	12	12	6
Tube						
Max Tube Capacity (ml)	1.5/2ml	1.5/2ml	1.5/2ml	10ml	15ml	50ml
Max Tube Dimensions (Ø x L mm)	11*38	11*38	11*38	16*86	17*121	29 *105
Tube Type	Round /Conical bottom	Round /Conical bottom	Round /Conical bottom	Round bottom	Conical bottom	Round bottom

*Haier Biomedical also can provide 0.2ml adapter (sets of 24) (BE12J2003),0.5ml adapter (sets of 24) (BE12JN002) for 1.5/2ml tube rotor



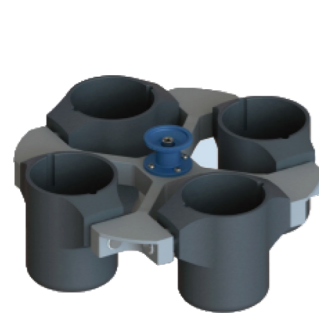
BE No.	BE12DB000	BE12E5000	BE12DF000	BE12DG000	BE12DE000
Type	Sealed	Sealed	Steel sleeves	Steel sleeves	Steel sleeves
Max Capacity	6*50ml	12*8*0.2ml	42*15ml	12*50(15)ml	10*100ml
Max RCF (xg)	16421	14892	4472	4640	3350
Max Speed (rpm)	12000	12000	5000	5000	4500
Max Tubes Per Rotor	6	12	42	12pcs(50ml) 12pcs(15ml)	10
Tube					
Max Tube Capacity (ml)	50ml	0.2 ml 8-strip PCR	15ml	50(15)ml	100ml
Max Tube Dimensions (Ø x L mm)	29*118	6*18	17*121	29*118 17*121	41*120
Tube Type	Conical bottom	PCR	Round/Conical bottom	Round/Conical bottom	Round bottom

Adapter(Sets of 6) for BE12DB000

BE No.	BE12JC002
Max Capacity	15ml
Tube	
Max Tube Dimensions (Ø x L mm)	17*121
Tube Type	Conical bottom



Swing-out Rotor



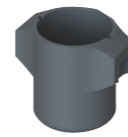
Swing-out rotor with round buckets

Swing-out Rotor Block



BE No.	BE12FJ001
Max. RCF	3220xg
Max. speed	4000rpm

Round Bucket (Sets of 4)



BE No.	BE12G0000
Max Capacity	500ml
Bucket Type	Flat bottom



Swing-out rotor with biocontainment round buckets

Swing-out Rotor Block



BE No.	BE12FJ001
Max. RCF	3220xg
Max. speed	4000rpm

Round Bucket & Lid (sets of 4)



BE No.	BE12G8000	BE12J2004
Max Capacity	500ml	NA
Bucket Type	Flat bottom	NA

Adapter (Sets of 4) for BE12G0000, BE12G8000



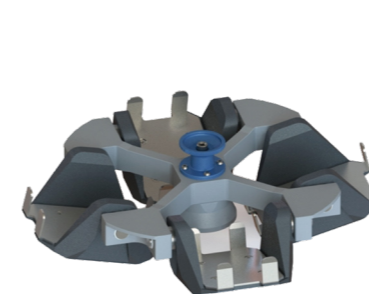
BE No.	No Adapter Needed	BE12JP001	BE12FG001	BE12FF001	BE12JS001
Max Capacity	500ml	250ml	225ml	100ml	4*50ml
Tubes Per Adapter/Rotor	4	1/4	1/4	1/4	4/16
Tube					
Max Tube Dimensions (Ø x L mm)	80*136	62*123	60*136	38*120	29*118
Tube Type	Flat bottom	Flat bottom	Conical bottom	Round bottom	Conical bottom

Adapter (Sets of 4) for BE12G0000, BE12G8000



BE No.	BE12JR001	BE12JQ001	BE12JD002	BE12JE002
Max Capacity	10*15ml	14*10ml	19*5/7ml	30*1.5/2ml
Tubes Per Adapter/Rotor	10/40	14/56	19/76	30/120
Tube				
Maximum Tube Dimensions (Ø x L mm)	17*121	15*105	13*75/100	11*38
Tube Type	Conical bottom	Large blood collection tube	Small/Large blood collection tube	Round/Conical bottom

*Haier Biomedical also can provide 0.2ml adapter (sets of 24) (BE12J2003), 0.5ml adapter (sets of 24) (BE12JN002) for 1.5/2ml tube rotor



Swing-out rotor with plate buckets

Swing-out Rotor Block



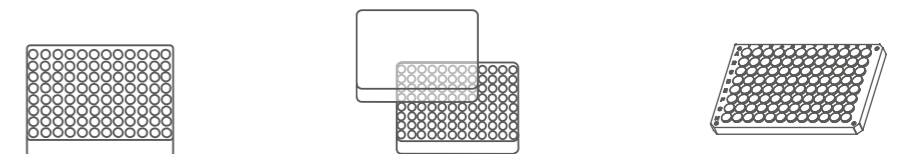
BE No.	BE12FJ001
Max. RCF	2612xg
Max. speed	4000rpm

Plate Bucket (Sets of 4)



BE No.	BE12H5000
Max Capacity	1 plate
Bucket Type	Rectangular bottom

Plates for BE12H5000



Plates per rotor	4	4	4
W*D*H (mm)	128*86*15	128*86*17.5	128*86*20
Plate Type	MTP (without lid)	MTP (with lid)	PCR plate 96-fold

Benchtop High-Speed Refrigerated Centrifuge

Scope of Application

Mainly used for nucleic acid extraction, DNA/RNA separation, purification, virus separation and protein precipitation in the laboratory. Widely used in universities, third party testing organizations, disease prevention, medical and health, biological pharmaceutical and other related fields.



LX-185T100R

Product Features



Wide range of rotors for application flexibility, compatible with tubes/bottles from 0.2 ml to 100ml



Short pre-cooling time and precise temperature control performance



Fast sample processing at maximum speeds of up to 18,500 rpm (30,130xg)



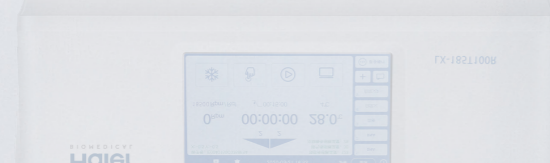
Use of brushless induction motors to provide maintenance-free operation, eliminating carbon particle emissions





Optimized sound design for low noise levels ($\leq 52\text{dB(A)}$)




Automatic radio-frequency rotor identification (RFID) with over speed protection





 Each rotor use frequency monitoring to guarantee maximum operational safety


 Real time loading imbalance detection, immediate shutdown protection in case of imbalance


Intuitive Interface

 The 7-inch 45°glove-friendly touchscreen, the wide viewing angle more comfortable and practical for users of all heights

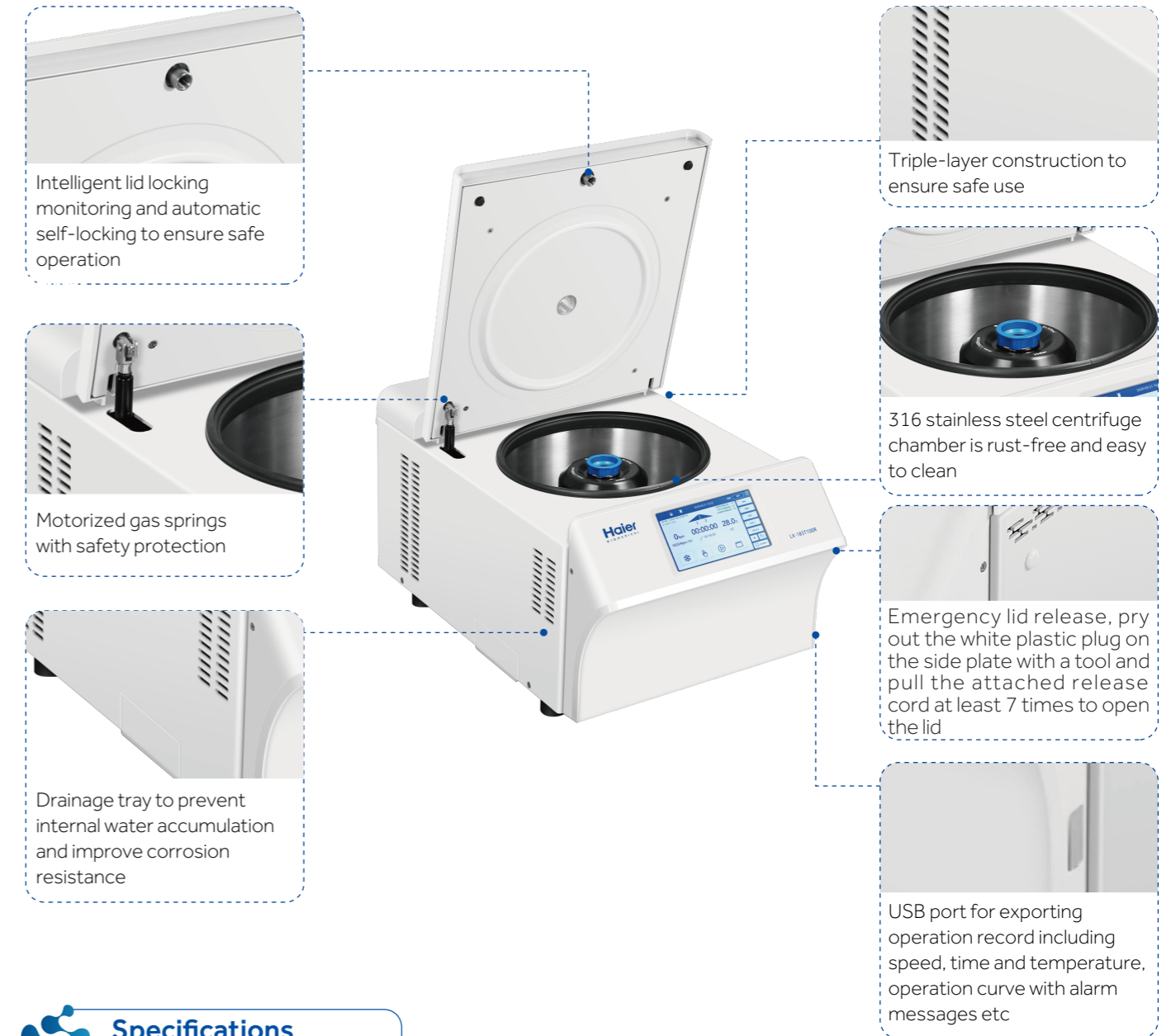
 Further enhanced with access controls such as user login with password protection, the independent program data of each user is managed separately

 Quick recall of up to 1000+ programs with alpha-numeric naming to minimize time between runs and for quick run start by routine users

 The speed, centrifugal force, time and temperature can be changed by user during the centrifugation process

 9 acceleration + 10 deceleration stages

Product Parts



Specifications

Model	Maximum Capacity	Speed Range (rpm)	Max RCF(xg)	Speed Accuracy	Time Setting Range	Precooling Function	Temperature Setting Range(°C)	Display
LX-185T100R	4*100 ml	500~18500	30130	±10rpm	1s~99h59m59s (1-second increment)	Yes	-20~40, adjustable to 1	7 inch touch screen

Cooling	Noise Level dB(A)	Power Supply (V/Hz)	Power(W)	Exterior Dimensions (W*D*H)(mm)	Lid Opening Height(mm)	Net Weight (kg)	Packing Dimensions (W*D*H)(mm)	Gross Weight(kg)	Certifications
Direct Cooling	≤52	AC220/50/60	1200	420*680*330	860	57	508*806*528	73	CE



Acceleration/Deceleration setting.

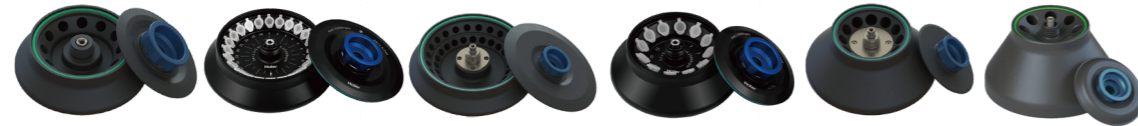
Target speed/centrifugal force and real-time speed display.

Temperature set-point and real-time temperature display.

Quick access to stored programs. 1000+ program storage, supports customized programs for convenient.

Clear one-touch buttons for fast refrigeration, fast centrifugation, intelligent start-stop and lid-closing status.

Fixed-angle Rotor



BE No.	BE12DKZ00	BE12C6000	BE12CB000	BE12DJZ00	BE12CC000	BE12CA000
Type	Sealed	Sealed	Sealed	Sealed	Sealed	Sealed
Max Capacity	12*1.5/2ml	24*1.5/2ml	48*1.5/2ml	12*5ml	12*10ml	8*15ml
Max RCF (xg)	26019	30130	19083	18090	16071	13200
Max Speed (rpm)	18500	17500	13000	16000	12500	12000
Tubes per Rotor	12	24	48	12	12	8
Tube						
Max Tube Capacity (ml)	1.5/2ml	1.5/2ml	1.5/2ml	5ml	10ml	15ml
Max Tube Dimensions (Ø x L mm)	11*38	11*38	11*38	13.5*75	16*86	17*121
Tube Type	Round /Conical bottom	Round /Conical bottom	Round /Conical bottom	Round bottom	Round bottom	Conical bottom

*Haier Biomedical also can provide 0.2ml adapter (sets of 24) (BE12J2003),0.5ml adapter (sets of 24) (BE12JN002) for 1.5/2ml tube rotor



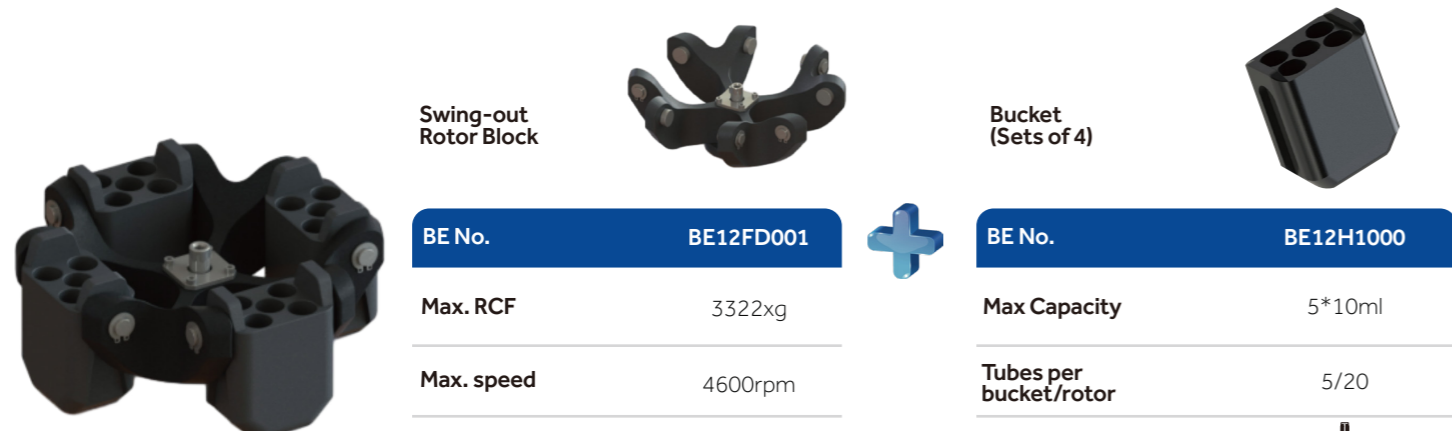
BE No.	BE12CD000	BE12DD000	BE12DLZ00	BE12DPZ00	BE12DMZ00	BE12DNZ00
Type	Sealed	Sealed	Sealed	Steel sleeve	Steel sleeve	Steel sleeve
Max Capacity	6*50ml	6*50ml	12*8*0.2ml	18*15ml	6*50/15ml	6*100ml
Max RCF (xg)	15294	16421	18516	4749	3577	3348
Max Speed (rpm)	12000	12000	12000	5000	5000	4800
Tubes per Rotor	6	6	12	18	6 pcs(50ml) 6 pcs(15ml)	6
Tube						
Max Tube Capacity (ml)	50ml	50ml	0.2ml 8-strip PCR	15ml	50(15)ml	100ml
Max Tube Dimensions (Ø x L mm)	29*105	29*118	6*18	17*121	29*118 17*121	41*120
Tube Type	Round bottom	Conical bottom	PCR	Round /Conical bottom	Round /Conical bottom	Round bottom

Adapter(Sets of 6) for BE12DD000

BE No.	BE12JC002
Max Capacity	15ml
Tube	
Max Tube Dimensions (Ø x L mm)	17*121
Tube Type	Conical bottom




Swing-out Rotor




Swing-out Rotor Block



BE No.	BE12FD001
Max. RCF	3322xg
Max. speed	4600rpm

Bucket (Sets of 4)

BE No.	BE12H1000
Max Capacity	5*10ml
Tubes per bucket/rotor	5/20
Tube	
Max Tube Dimensions (Ø x L mm)	15*105
Tube Type	Large blood collection tube

Adapter (Sets of 50) for BE12H1000


BE No.	BE12JN001
Max Capacity	5ml
Tube	
Max Tube Dimensions (Ø x L mm)	13*75
Tube Type	Small blood collection tube





Swing-out Rotor Block

BE No.	BE12FD001
Max. RCF	3322xg
Max. speed	4600rpm

Bucket (Sets of 4)


BE No.	BE12H2000
Max Capacity	2*15ml
Tubes per bucket/rotor	2/8
Tube	
Max Tube Dimensions (Ø x L mm)	17*121
Tube Type	Conical bottom



Swing-out Rotor Block

BE No.	BE12FD001
Max. RCF	3322xg
Max. speed	4600rpm

Bucket (Sets of 4)

BE No.	BE12H3000
Max Capacity	50ml
Tubes per bucket/rotor	1/4
Tube	
Max Tube Dimensions (Ø x L mm)	29*118
Tube Type	Conical bottom



Swing-out Rotor Block



BE No.	BE12FD001
Max. RCF	3322xg
Max. speed	4600rpm



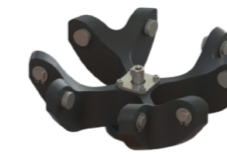
Bucket (Sets of 4)



BE No.	BE12G7000	BE12J1004
Max Capacity	100ml	NA
Bucket Type	Flat bottom	NA



Swing-out Rotor Block



BE No.	BE12FD001
Max. RCF	3322xg
Max. speed	4600rpm



BD CPT tube bucket (sets of 4)



BE No.	BE12G6000
Max Capacity	8ml
Tubes per bucket/rotor	1/4
Tube	
Max Tube Dimensions (Ø x L mm)	16*130
Tube Type	Round bottom

Adapter(Sets of 4) for BE12G7000



BE No.	BE12JU003	BE12JV003	BE12JW003	BE12JX003	BE12JY003	BE12JZ003	BE12J0004
Max Capacity	100ml	50ml	2*15ml	15ml	4*10ml	4*5/7ml	4*1.5/2ml
Tubes per adapter/rotor	1/4	1/4	2/8	1/4	4/16	4/16	4/16
Tube							
Max Tube Dimensions (Ø x L mm)	41*120	29*118	17*121	17*121	15*105	13*75/100	11*38
Tube Type	Round bottom	Conical bottom	Conical bottom	Conical bottom	Large blood collection tube	Small/Large blood collection tube	Round/Conical bottom

BE No.	BE12FC001
Max. RCF	2287xg
Max. speed	4500rpm
Max Capacity	2 plates
Bucket Type	Rectangular bottom

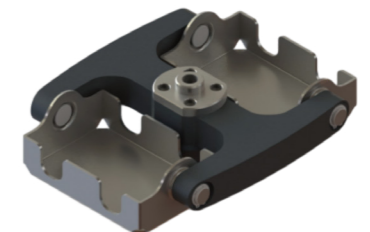
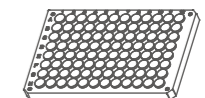
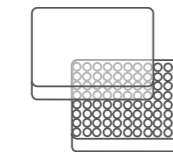
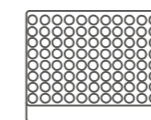


Plate Swing-out Rotor

Plates for BE12H5000



Plates per rotor	2	2	2
W*D*H (mm)	128*86*15	128*86*17.5	128*86*20
Plate Type	MTP (without lid)	MTP (with lid)	PCR plate 96-fold

Benchtop High-speed Refrigerated Microcentrifuge








Scope of Application

Mainly used for nucleic acid extraction, DNA/RNA separation, purification, virus separation and protein precipitation in the laboratory. Widely used in universities, third party testing organizations, disease prevention, medical and health, biological pharmaceutical and other related fields.








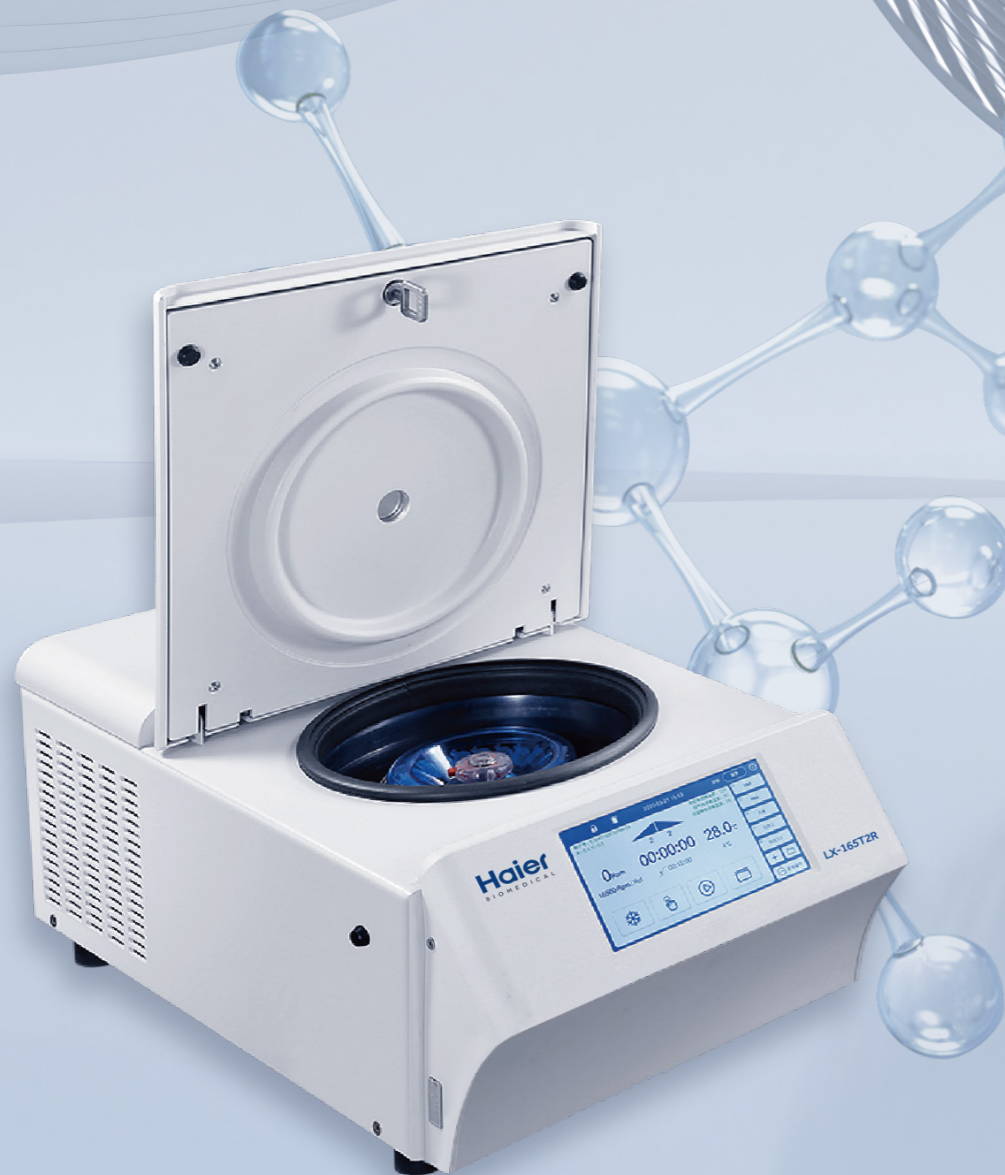
LX-165T2R

Product Features

-  Short pre-cooling time of only 5 minutes from room temperature to 4°C
-  Fast sample processing at maximum speeds of up to 16,500 rpm (25,872 x g)
-  Precise temperature and centrifugal speed control ensures optimal separation results
-  Use of brushless induction motors to provide maintenance-free operation, eliminating carbon particle emissions
-  Optimized sound design for low noise levels (≤52dB(A))
-  Automatic radio-frequency rotor identification (RFID) and rotor life monitoring for maximum operational safety
-  Real time loading imbalance detection, immediate shutdown protection in case of imbalance

Intuitive Interface

-  The 7-inch 45° glove-friendly touchscreen, the wide viewing angle more comfortable and practical for users of all heights
-  Further enhanced with access controls such as user login with password protection, the independent program data of each user is managed separately
-  Quick recall of up to 1000+ programs with alpha-numeric naming to minimize time between runs and for quick run start by routine users
-  The speed, centrifugal force, time and temperature can be changed by user during the centrifugation process
-  2 acceleration + 3 deceleration stages



Acceleration/Deceleration setting.

Target speed/centrifugal force and real-time speed display.

Temperature set-point and real-time temperature display.

Quick access to stored programs. 1000+ program storage, supports customized programs for convenient.

Clear one-touch buttons for fast refrigeration, fast centrifugation, intelligent start-stop and lid-closing status.

Product Parts

Intelligent lid locking monitoring and automatic self-locking to ensure safe operation

Viewing port in the lid for observing the operating condition of the rotor

Drainage tray to prevent internal water accumulation and improve corrosion resistance

Triple-layer construction to ensure safe use

316 stainless steel centrifuge chamber is rust-free and easy to clean

Emergency lid release, pry out the white plastic plug on the side plate with a tool and pull the attached release cord at least 7 times to open the lid

USB port for exporting operation record including speed, time and temperature, operation curve with alarm messages etc.

Specifications

Model	Maximum Capacity	Speed Range(rpm)	Max RCF(xg)	Speed Accuracy	Time Setting Range	Precooling Function	Temperature Setting Range(°C)	Display
LX-165T2R	12*10 ml	500-16500	25872	±10rpm	1s~99h59m59s (1-second increment)	Yes	-20~40, adjustable to 1	7 inch touchscreen
Cooling	NoiseLevel dB(A)	Power Supply (V/Hz)	Power(W)	Exterior Dimensions (W*D*H)(mm)	Net Weight (kg)	Packing Dimensions (W*D*H)(mm)	Gross Weight(kg)	Certifications
Direct Cooling	≤52	AC220/50/60	480	340*625*248	34	425*795*430	48	CE

Fixed-angle Rotor



	BE12C0Z00	BE11D0Z00	BE12D0Z00	BE12E0Z00	BE12DR000
Type	Plastic cover	Sealed	Sealed	Sealed	Sealed
Max Capacity	24*1.5/2ml	24*1.5/2ml	12*5ml	4*8*0.2ml	12*10ml
Max RCF (xg)	25872	21382	21407	18891	2753
Max Speed (rpm)	16500	15000	15000	15000	5000
Tubes per Rotor	24	24	12	4	12
Tube					
Max Tube Capacity (ml)	1.5/2ml	1.5/2ml	5ml	0.2 ml 8-strip PCR	10ml
Max Tube Dimensions (Ø x L mm)	11*38	11*38	13.5*75	6*18	15*105
Tube Type	Round /Conical bottom	Round /Conical bottom	Round bottom	PCR	Large blood collection tube

Adapter(Sets of 50) for BE12DR000

BE No.	BE12JC002
Max Capacity	5ml
Tube	
Max Tube Dimensions (Ø x L mm)	13*75
Tube Type	Small blood collection tube

*Haier Biomedical also can provide 0.2ml adapter (sets of 24) (BE12J2003), 0.5ml adapter (sets of 24) (BE12JN002) for 1.5/2ml tube rotor

Benchtop High-speed Microcentrifuge

Scope of Application








Specifically used for the separation and purification of samples of cells, macromolecular proteins, blood, body fluids, DNA/RNA, plasmids, bacteria and viruses. etc.



LX-165T2-J



Product Features

-  Fast sample processing at maximum speeds of up to 16,500rpm (25,872xg)
-  Compact footprint with a wide array of microcentrifuge tubes from 0.2 to 5 ml
-  Use of brushless induction motors to provide maintenance-free operation, eliminating carbon particle emissions
-  Automatic rotor identification with over speed protection
-  Optimized sound design for low noise levels ($\leq 58\text{dB(A)}$)
-  Each rotor use frequency monitoring to guarantee maximum operational safety
-  Real time loading imbalance detection, immediate shutdown protection in case of imbalance

Intuitive Interface

-  LED keypad and control knob for easy operation, the wide viewing angle more comfortable and practical for users of all heights.
-  Quick recall of up to 99 programs for quick run start by routine users
-  2 acceleration + 3 deceleration stages
-  The speed, centrifugal force, time and temperature can be changed by user during the centrifugation process.

Target speed/centrifugal force/time and real-time operation data display.



Screen lock function to prevent press errors

One key to recall stored programs for more convenient operation

Acceleration/Deceleration rates

Product Parts



Patented anti-seismic door lock. In case of abnormal vibration, the cover can be locked reliably



USB port for exporting operation record including speed, time and temperature, operation curve with alarm messages etc



Unique air duct structure design, the heat inside the centrifugal chamber can dissipate quickly



316 stainless steel centrifuge chamber is rust-free and easy to clean



Emergency lid release, pry out the white plastic plug on the side plate with a tool and pull the attached release cord to open the lid



Triple-layer construction to ensure safe use

Specifications

Model	Maximum Capacity	Speed Range (rpm)	Max RCF(xg)	Speed Accuracy	Time Setting Range	Display		
LX-165T2-J	12*5 ml	500-16500	25872	±10rpm	1s-99h59m59s (1-second increment)	LED		
Noise Level dB(A)	Power Supply (V/Hz)	Power(W)	Exterior Dimensions (W*D*H)(mm)	Lid Opening Height(mm)	Net Weight (kg)	Packing Dimensions (W*D*H)(mm)	Gross Weight(kg)	Certifications
≤58	AC220/50/60	230	270*375*252	526	18	375*560*370	20	CE

Fixed-angle Rotor



	BE12C5Z00	BE12C4Z00	BE12D4Z00	BE12E4Z00
Type	Plastic cover	Sealed	Sealed	Sealed
Max Capacity	24*1.5/2ml	24*1.5/2ml	12*5ml	4*8*0.2ml
Max RCF (xg)	25872	21382	21407	18891
Max Speed (rpm)	16500	15000	15000	15000
Tubes per Rotor	24	24	12	4
Tube				
Max Tube Capacity (ml)	1.5/2ml	1.5/2ml	5ml	0.2 ml 8-strip PCR
Max Tube Dimensions (Ø x L mm)	11*38	11*38	13.5*75	6*18
Tube Type	Round /Conical bottom	Round /Conical bottom	Round bottom	PCR

*Haier Biomedical also can provide 0.2ml adapter (sets of 24) (BE12J2003), 0.5ml adapter (sets of 24) (BE12JN002) for 1.5/2ml tube rotor



Benchtop Low-speed Centrifuge

Scope of Application

Specifically designed for routine clinical and life science applications, mainly used for separating whole blood or blood components of human origin and cell collection etc.

LX-60T100-J

Product Features



Offer a compact footprint and compatible with 5ml, 10ml, 15ml, 50ml or 100ml sample tube, small and large blood collection tubes



Use of brushless induction motors to provide maintenance-free operation, eliminating carbon particle emissions



Optimized sound design for low noise levels ($\leq 56\text{dB(A)}$)



Automatic rotor identification with over speed protection




Real time loading imbalance detection, immediate shutdown protection in case of imbalance





Each rotor use frequency monitoring to guarantee maximum operational safety

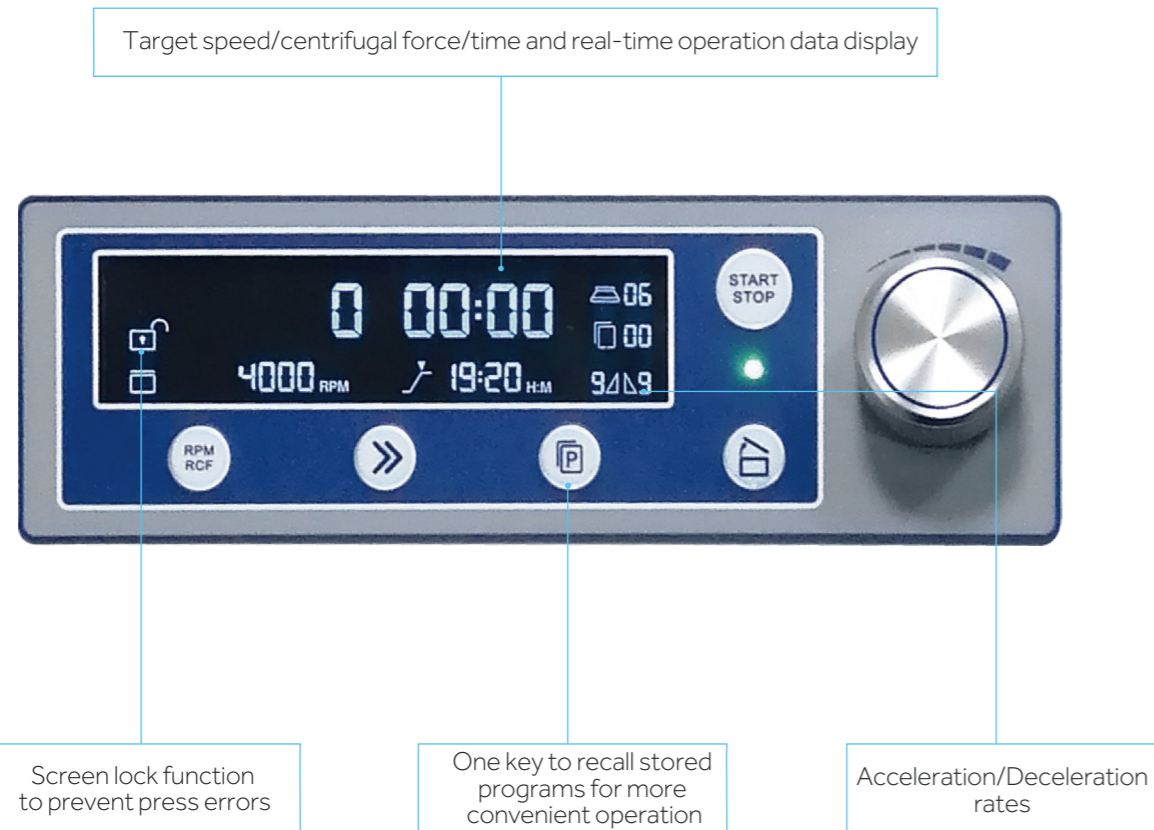
Intuitive Interface

 LED keypad and control knob for easy operation, the wide viewing angle more comfortable and practical for users of all heights.

 Quick recall of up to 99 programs for quick run start by routine users

 9 acceleration + 10 deceleration stages

 The speed, centrifugal force, time and temperature can be changed by user during the centrifugation process.



Product Parts

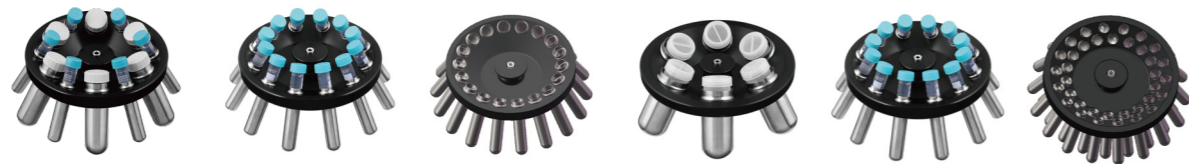


Specifications

Model	Maximum Capacity	Speed Range (rpm)	Max RCF(xg)	Speed Accuracy	Time Setting Range	Display	Noise Level dB(A)	Power Supply
LX-60T100-J	6*100ml	500-6000	4749	±10rpm	1s-99h59m59s (1-second increment)	LED	≤56	220/50/60

Power(W)	Exterior Dimensions (W*D*H)(mm)	Lid Opening Height (mm)	Net Weight (kg)	Packing Dimensions (W*D*H)(mm)	Gross Weight (kg)	Certifications
150	340*447*281	627	25	441*544*421	28	CE

Fixed-angle Rotor



BE No.	BE11D6000	BE11D5000	BE11DT000	BE11D7000	BE12D6000	BE11DU000
Type	Steel sleeve	Steel sleeve	Steel sleeve	Steel sleeve	Steel sleeve	Steel sleeve
Max Capacity	6*50(15)ml	12*15ml	18*15ml	6*100ml	12*10ml	36*10ml
Max RCF (xg)	3578	4749	3578	3349	2683	2465
Max Speed (rpm)	5000	6000	5000	4800	5000	4200
Max Tubes Per Rotor	6 pcs(50ml) 6 pcs(15ml)	12	18	6	12	36
Tube						
Max Tube Capacity (ml)	50 (15)ml	15ml	15ml	100ml	10ml	10ml
Max Tube Dimensions (Ø x L mm)	29*118 17*121	17*121	17*121	41*120	15*105	15*105
Tube Type	Round/Conical bottom	Round/Conical bottom	Round/Conical bottom	Round bottom	Large blood collection tube	Large blood collection tube

Adapter(Sets of 50) for BE12D6000, BE11DU000

BE No.	BE12JN001
Max Capacity	5ml
Tube	
Max Tube Dimensions (Ø x L mm)	13*75
Tube Type	Small blood collection tube



Swing-out Rotor



Swing-out Rotor Block

BE No.	BE12F2001
Max. RCF	2770xg
Max. speed	4200rpm

+



Bucket (Sets of 4)

BE No.	BE12H8000
Max Capacity	1*15ml 2*10ml 2*5ml
Tubes per bucket/rotor	15ml(1/4), 10ml(2/8) 5ml(2/8)
Tube	
Max Tube Dimensions (Ø x L mm)	17*121 16*86 13*75
Tube Type	15ml(Conical bottom) 10ml/5ml(Round bottom)



Swing-out Rotor Block



BE No.	BE12F2001
Max. RCF	2770xg
Max. speed	4200rpm



Bucket (Sets of 4)



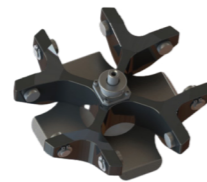
BE No.	BE12H1000
Max Capacity	5*10ml
Tubes per bucket/rotor	5/20
Tube	
Max Tube Dimensions (Ø x L mm)	15*105
Tube Type	Large blood collection tube

Adapter(Sets of 50) for BE12H1000

BE No.	BE12JN001
Max Capacity	5ml
Tube	
Max Tube Dimensions (Ø x L mm)	13*75
Tube Type	Small blood collection tube



Swing-out Rotor Block



BE No.	BE12F2001
Max. RCF	2770xg
Max. speed	4200rpm



Bucket (Sets of 4)



BE No.	BE12H2000
Max Capacity	2*15ml
Tubes per bucket/rotor	2/8
Tube	
Max Tube Dimensions (Ø x L mm)	17*121
Tube Type	Conical bottom



Swing-out Rotor Block



BE No.	BE12F2001
Max. RCF	2770xg
Max. speed	4200rpm



Bucket (Sets of 4)



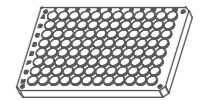
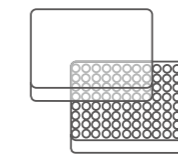
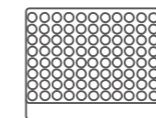
BE No.	BE12H3000
Max Capacity	50ml
Tubes per bucket/rotor	1/4
Tube	
Max Tube Dimensions (Ø x L mm)	29*118
Tube Type	Conical bottom

BE No.	BE12F3001
Max. RCF	2130xg
Max. speed	4200rpm
Max Capacity	2 plates
Bucket Type	Rectangular bottom



Plate Swing-out Rotor

Plates for BE12H5000



Plates per rotor	2	2	2
W*D*H (mm)	128*86*15	128*86*17.5	128*86*20
Plate Type	MTP (without lid)	MTP (with lid)	PCR plate 96-fold



Benchtop Low-speed Large-capacity Centrifuge

Scope of Application

Specifically designed for routine sample processing of serum, plasma, whole blood and other body fluids, rapid sedimentation of protein precipitates and processing of samples for in-vitro cytotoxicity studies.



LX-60T500-J

Product Features



Wide range of rotors for application flexibility, compatible with tubes/bottles from 0.2 ml to 500ml



Automatic rotor identification with over speed protection



Use of brushless induction motors to provide maintenance-free operation, eliminating carbon particle emissions



Real time loading imbalance detection, immediate shutdown protection in case of imbalance



Optimized sound design for low noise levels($\leq 65\text{dB(A)}$)



Each rotor use frequency monitoring to guarantee maximum operational safety

Intuitive Interface



LED keypad and control knob for easy operation, the wide viewing angle more comfortable and practical for users of all heights



Quick recall of up to 99 programs for quick run start by routine users



9 acceleration + 10 deceleration stages



The speed, centrifugal force, time and temperature can be changed by user during the centrifugation process

Target speed/centrifugal force/time and real-time operation data display.

Screen lock function to prevent press errors



One key to recall stored programs for more convenient operation

Acceleration/Deceleration rates

Product Parts



Patented anti-seismic door lock. In case of abnormal vibration, the cover can be locked reliably



Motorized gas springs with safety protection



Emergency lid release, pry out the white plastic plug on the side plate with a tool and pull the attached release cord to open the lid



USB port for exporting operation record including speed, time and temperature, operation curve with alarm messages etc



Unique air duct structure design, the heat inside the centrifugal chamber can dissipate quickly



Triple-layer construction to ensure safe use



316 stainless steel centrifuge chamber is rust-free and easy to clean

Key Features of Quick-Flip Biocontainment Safety Lids

- Quick-Flip Hinge Design**
 Our hinged lids do not need to be removed from the rotor. Just a quick flip gives you fast access to your samples
- Low-Pressure Closing Clip**
 The simple low-pressure clip offers a secure closure with an audible "click" and visual cues, enhancing safety and replacing multi-turn screw caps or complex lever systems
- Ambidextrous & Glove-Friendly**
 Designed for ease of use, our lids can be operated with either hand and are glove-friendly, ensuring seamless operation
- Premium Polymer Construction**
 Made from Polyetherimide (PEI), our lids provide excellent chemical resistance, transparency, and durability
- Certified Safety and Reliability**
 Independently tested and certified per IEC-61010 Section 2-020 Annex AA, ensuring top-level safety and performance

Choose our Quick-Flip biocontainment safety lids for innovative, safe, and durable lab solutions.



Specifications

Model	Maximum Capacity	Speed Range (rpm)	Max RCF(xg)	Speed Accuracy	Time Setting Range	Display	Noise Level dB(A)	Power Supply
LX-60T500-J	4*500 ml	500-6000	5353	±10rpm	1s-99h59m59s (1-second increment)	LED	≤65	AC220/50/60

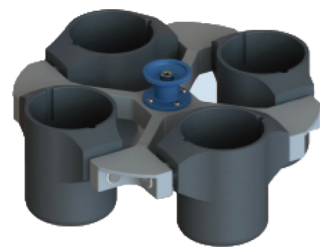
Power(W)	Exterior Dimensions (W*D*H)(mm)	Lid Opening Height (mm)	Net Weight (kg)	Packing Dimensions (W*D*H)(mm)	Gross Weight (kg)	Certifications
700	478*624*365	840	60	560*752*562	75	CE

Fixed-angle Rotor



BE No.	BE12DA000	BE12D7000	BE12C8000	BE12D8000	BE12D9000	BE12DQ000
Type	Steel sleeve	Steel sleeve	Steel sleeve	Steel sleeve	Steel sleeve	Steel sleeve
Max Capacity	6*50 (15)ml	12*50 (15)ml	12*15ml	42*15ml	10*100ml	60*10ml
Max RCF (xg)	5353	4528	5353	4528	3260	2576
Max Speed (rpm)	6000	5000	6000	5000	4500	4000
Max Tubes Per Rotor	6 pcs(50ml) 6 pcs(15ml)	12 pcs(50ml) 12 pcs(15ml)	12	42	10	60
Tube						
Max Tube Capacity (ml)	50 (15)ml	50 (15)ml	15ml	15ml	100ml	10ml
Max Tube Dimensions (Ø x L mm)	29*118 17*121	29*118 17*121	17*121	17*121	41*120	15*105
Tube Type	Round/Conical bottom	Round/Conical bottom	Round/Conical bottom	Round/Conical bottom	Round bottom	Round bottom with attached snap cap

Swing-out Rotor



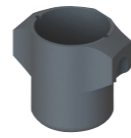
Swing-out rotor with round buckets

Swing-out Rotor Block



BE No.	BE12FK001
Max. RCF	3220xg
Max. speed	4000rpm

Round Bucket (Sets of 4)



BE No.	BE12G0000
Max Capacity	500ml
Bucket Type	Flat bottom



Swing-out rotor with biocontainment round buckets

Swing-out Rotor Block



BE No.	BE12FK001
Max. RCF	3220xg
Max. speed	4000rpm

Round Bucket & Lid (sets of 4)



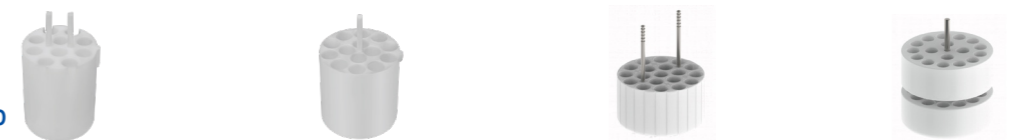
BE No.	BE12G8000	BE12J2004
Max Capacity	500ml	NA
Bucket Type	Flat bottom	NA

Adapter (Sets of 4) for BE12G0000, BE12G8000



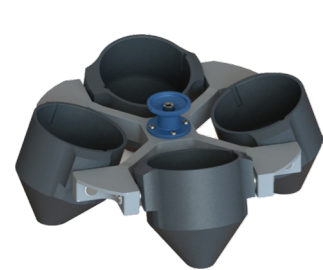
BE No.	No Adapter Needed	BE12JP001	BE12FG001	BE12FF001	BE12JS001
Max Capacity	500ml	250ml	225ml	100ml	4*50ml
Tubes Per Adapter/Rotor	4	1/4	1/4	1/4	4/16
Tube					
Max Tube Dimensions (Ø x L mm)	80*136	62*123	60*136	38*120	29*118
Tube Type	Flat bottom	Flat bottom	Conical bottom	Round bottom	Conical bottom

Adapter (Sets of 4) for BE12G0000, BE12G8000



BE No.	BE12JR001	BE12JQ001	BE12JD002	BE12JE002
Max Capacity	10*15ml	14*10ml	19*5/7ml	30*1.5/2ml
Tubes Per Adapter/Rotor	10/40	14/56	19/76	30/120
Tube				
Maximum Tube Dimensions (Ø x L mm)	17*121	15*105	13*75/100	11*38
Tube Type	Conical bottom	Large blood collection tube	Small/Large blood collection tube	Round/Conical bottom

*Haier Biomedical also can provide 0.2ml adapter (sets of 24) (BE12J2003) , 0.5ml adapter (sets of 24) (BE12JN002) for 1.5/2ml tube rotor.



Swing-out rotor with conical buckets

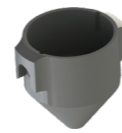
Swing-out Rotor Block



BE No.	BE12FK001
Max. RCF	3220xg
Max. speed	4000rpm



Conical Bucket (Sets of 4)

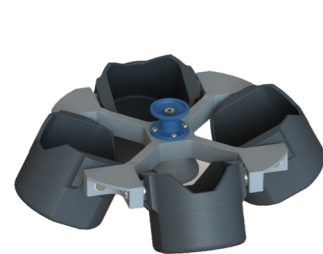


BE No.	BE12G1000
Max Capacity	500ml
Bucket Type	Conical bottom



Adapter (Sets of 4) for BE12G1000

BE No.	No adapter needed	BE12JB002
Max Capacity	500ml	250ml
Tubes Per Adapter/Rotor	4	1/4
Tube		
Max Tube Dimensions (Ø x L mm)	96*150	60*165
Tube Type	Conical bottom	Conical bottom



Swing-out rotor with square buckets

Swing-out Rotor Block



BE No.	BE12FK001
Max. RCF	3220xg
Max. speed	4000rpm



Square Bucket (Sets of 4)



BE No.	BE12HA000
Max Capacity	500ml
Bucket Type	Flat bottom

Decap adapter (Sets of 4) for BE12HA000



BE No.	BE12JV001
Max Capacity	24*5/7ml
Tubes Per Adapter/Rotor	24/96
Tube	
Max Tube Dimensions (Ø x L mm)	13*75/100
Tube Type	Small/Large blood collection tube



Swing-out rotor with plate buckets

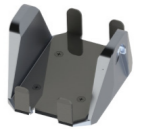
Swing-out Rotor Block



BE No.	BE12FK001
Max. RCF	3220xg
Max. speed	4000rpm

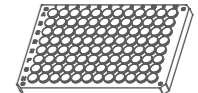
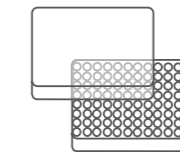
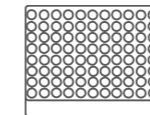


Plate Bucket (Sets of 4)



BE No.	BE12H5000
Max Capacity	1 plate
Bucket Type	Rectangular bottom

Plates for BE12H5000



Plates per rotor	4	4	4
W*D*H (mm)	128*86*15	128*86*17.5	128*86*20
Plate Type	MTP (without lid)	MTP (with lid)	PCR plate 96-fold

Mini-Centrifuge



LX-120T2Z / 50T2Z

Scope of Application

This product is used in micro centrifugal scenarios (single tube capacity is less than or equal to 2ml)

Product Advantages



LX-120T2Z



LX-50T2Z





Quiet

Suspension with shock absorber reduces noise output



Convenient

Simple and fast operation



Small

Can be held in your hand



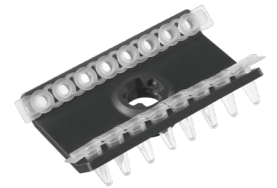
Safe

- Safety interlock lid with automatic shut-off if lid is open
- Anti vibration & absorption suction cup
- Splash and leak protection

Specifications

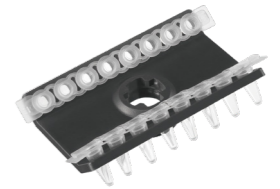
Model	LX-120T2Z	LX-50T2Z
Maximum Capacity	8*1.5/2 ml	8*1.5/2 ml
Max Speed (rpm)	12000	5000
Max RCF (xg)	7325	1270
Time Setting Range	10s-99m50s	-
Display	OLED	-
Noise (dB(A))	≤50	≤40
Power Supply (V/Hz)	100-240/50/60	100-240/50/60
Power (W)	35	25
Exterior Dimensions (W*D*H)(mm)	152*142*122	152*142*122
Net Weight (kg)	1.2	1.2
Packing Dimensions (W*D*H)(mm)	265*205*200	265*205*200
Gross Weight (kg)	3	3

LX-120T2Z Rotor list



Type	Fixed-angle rotor	Fixed-angle rotor
Max Capacity	8*1.5/2 ml	2*8*0.2 ml
Max RCF (xg)	7325	6225
Max Speed (rpm)	12000	12000
Tubes per Rotor	8	2
Tube		
Max Tube Capacity(ml)	1.5/2	0.2 8-strip PCR
Max Tube Dimension (Ø x L mm)	11*38	6*18
Tube Type	Round/Conical bottom	PCR

LX-50T2Z Rotor list



Type	Fixed-angle rotor	Fixed-angle rotor
Max Capacity	8*1.5/2 ml	2*8*0.2 ml
Max RCF (xg)	1270	1150
Max Speed (rpm)	5000	5000
Tubes per Rotor	8	2
Tube		
Max Tube Capacity (ml)	1.5/2	0.2 8-strip PCR
Max Tube Dimension (Ø x L mm)	11*38	6*18
Tube Type	Round/Conical bottom	PCR

Adapter(Sets of 24) for 1.5/2ml Fixed-angle rotor



BE No.	BE12J2003	BE12JN002
Max Capacity	0.2ml	0.5ml
Tube		
Max Tube Dimensions (Ø x L mm)	6.3*23	8*35
Tube Type	Conical bottom	Conical bottom

Centrifuge Consumables

Haier Biomedical manufactures and supplies a full compliment of premium quality centrifuge consumables suitable for a various applications and compatible with its range of centrifuges.

Centrifuge Bottle

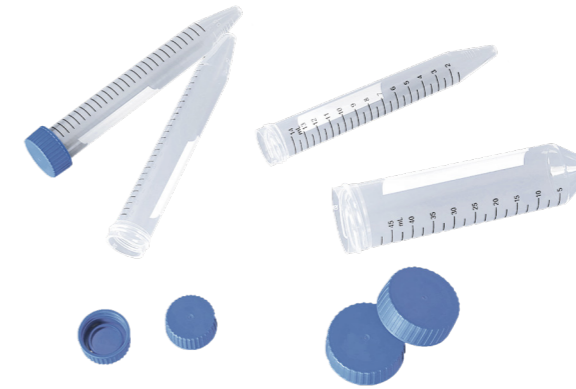


Product Features

- Unique design for highly-effective two-way sealing
- Design increases max centrifugal limits
- Temperature range: -80°C-120°C
- Clear scale for accurate and convenient data reading
- Sterile and RNase, DNase, human DNA and Pyrogen Free

CAT.NO.	Description	Max. RCF (xg)	Packing Specification
321007	225ml centrifuge bottle, sterile	6000	6pcs/bag, 6bags/case
321008	250ml centrifuge bottle, sterile	6000	6pcs/bag, 17bags/case
321009	500ml centrifuge bottle, sterile	6000	6pcs/bag, 6bags/case

Centrifuge Tubes



Product Features

- Tube and lid made of medical-grade polypropylene (PP) USP Class VI standards
- 15ml/50ml conical bottom design, high clarity, clear black line scale and pre-set white writing area
- The double-threaded tube cap is easy to grip for single-handed operation and reliable sealing
- Flat cap design; the cap top can be used as a sample information marking area
- RNase and DNase Free
- Gamma sterilized, sterile and pyrogen-free
- Various packaging options, including sterile racked packing, sterile bag-packed bulk packing, and non-sterile packing.



A large white frosted writing area



Flat and frosted tube cap facilitates marking



Clear printed scale

CAT.NO.	Description	Max. RCF (xg)	Packing Specification
311005	15ml centrifuge tube, sterile	12000	25pcs/bag, 20bags/box
311006	50ml centrifuge tube, sterile	12000	25pcs/bag, 20bags/box

Microcentrifuge Tubes



Product Features

Made of USP Class VI, medical-grade polypropylene (PP), free from release agent, plasticizer, bacteriostatic agent, and heavy metals

High-clarity tube for convenient sample observation

The unique cap design with flat surface for writing, delivers enhanced sealing and enables single-handed operation

Temperature range: -80°C~120°C



Ultra-high clarity makes samples clearly visible
Universal design suitable for all major brands



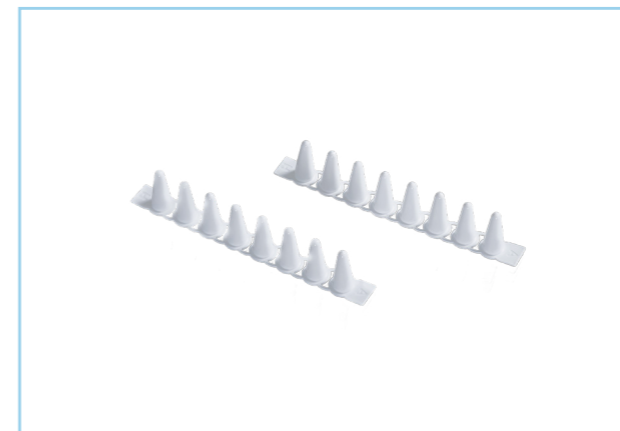
Frosted writing area



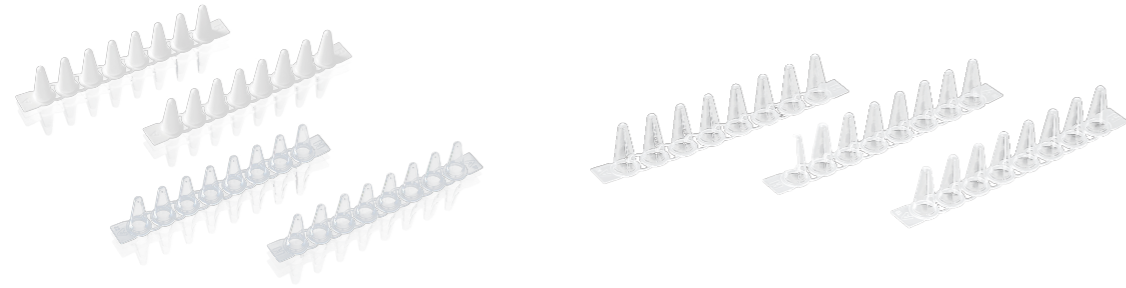
Snap-on safety cap to ensure safe centrifugation to maximize operational safety during centrifugation

CAT.NO.	Description	Max. RCF (xg)	Packing Specification
311001	0.6ml microcentrifuge tube, non-sterile	20000	1000pcs/box, 10box/ctn
311002	1.5ml microcentrifuge tube, non-sterile	20000	500/box, 10boxes/case
311004	2.0ml microcentrifuge tube, non-sterile	20000	500/box, 10boxes/case

Haier Biomedical's range of PCR centrifuge consumables include single tubes, 8-tube strips and different 96 well plate options.

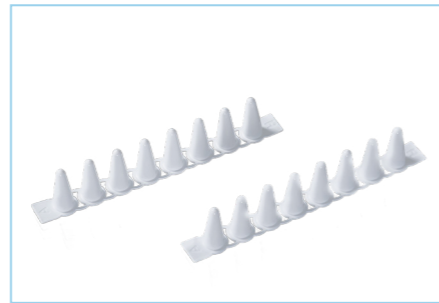
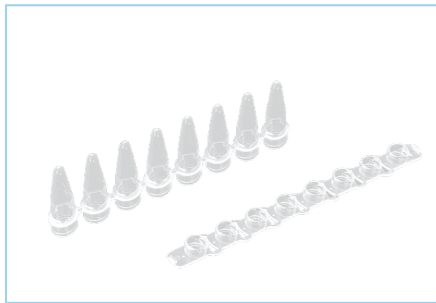


PCR Tube Strips



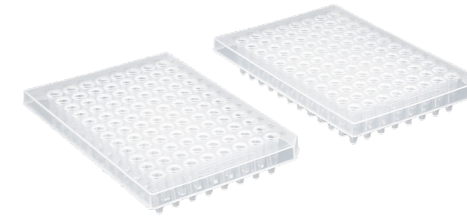
Product Features

- Made from pure polypropylene, it has thin and uniform wall for optimal heat transfer
- The easy-to-open tube and tube lid fasten securely to prevent evaporation and leakage
- RNase, DNase, human DNA and Pyrogen Free
- Suitable for the mainstream PCR and real-time PCR instruments



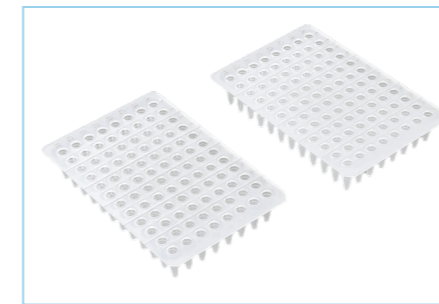
CAT.NO.	Description	Unit Quantity	Packing Specification
211001	0.2ml PCR single tube, thin-wall, flat cover	10000	500pcs/bag, 2bags/box, 10boxes/case
222002	0.1ml PCR 8-strip tube (with flat cover)	1250	125sets/bag, 10bags/case
222003	0.1ml PCR 8-strip tube (with flat cover), white	1250	125sets/bag, 10bags/case
292004	0.1ml PCR 8-strip tube--type B (with flat cover)	1250	125sets/bag, 10bags/case
292005	0.1ml PCR 8-strip tube--type B (with flat cover), white	1250	125sets/bag, 10bags/case
292006	0.2ml PCR 8-strip tube--type B (with flat cover)	1250	125sets/bag, 10bags/case
292007	0.2ml PCR 8-strip tube--type B (with flat cover), white	1250	125sets/bag, 10bags/case
222008	0.2ml PCR 8-strip tube (with flat cover)	1250	125strips/bag, 10bags/case
272009	0.2ml PCR 8-strip tube (with convex cover)	1250	125sets/bag, 10bags/case

PCR 96-Well Plates



Product Features

- High-quality polypropylene, manufactured in accordance with high quality standards to produce a reliable plate, delivering excellent uniformity across experiments.
- With a maximum volume of 0.3ml, it is suitable for 0.2ml PCR instruments
- The thin wall of the tube ensures uniform heat transfer and superior light transmittance
- The whole surface of the plate is smooth, firm, and resists deformation
- RNase, DNase, human DNA and Pyrogen Free



Clear and easy to read and easy to operate and identify



Prominent open profile reduces the risk of cross contamination

CAT.NO.	Description	Unit Quantity	Packing Specification
232024	0.2ml 96-well PCR plate, no skirt edge	50	10pcs/box, 5boxes/case
242025	0.2ml 96-well PCR plate, half skirt edge	50	10pcs/box, 5boxes/case
242026	0.2ml 96-well PCR plate, half skirt edge, high-temperature-resistant and anti-static	50	10pcs/box, 5boxes/case
232029	0.1ml 96-well PCR plate, no skirt edge	50	10pcs/box, 5boxes/case
242030	0.1ml 96-well PCR plate, half skirt edge	50	10pcs/box, 5boxes/case
242031	0.1ml 96-well PCR plate, half skirt edge, high-temperature-resistant and anti-static	50	10pcs/box, 5boxes/case
252032	0.1ml 96-well PCR plate, full skirt edge	50	10pcs/box, 5boxes/case
252035	0.1ml 96-well PCR plate with full skirt, H1 cutting angle, dual material (plate color random)	50	10pcs/box, 5boxes/case
252033	0.1ml 96-well PCR plate, full skirt edge, high-temperature-resistant and anti-static	50	10pcs/box, 5boxes/case