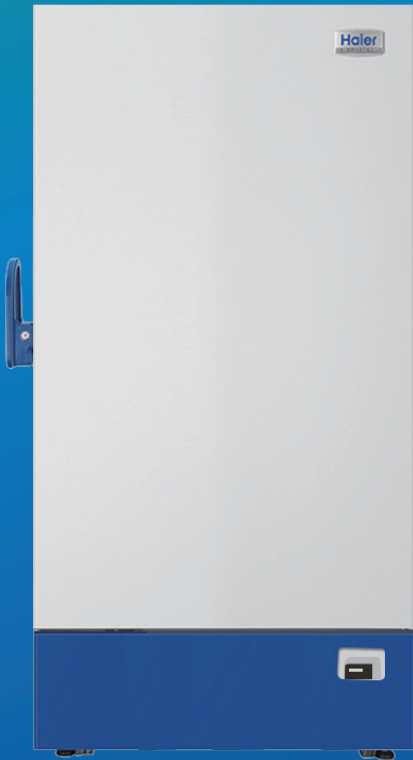


Large Capacity -30°C Biomedical Freezer



DW-30L818

Typical Installation and Application

For use in blood banks, hospitals, research institutions, electronics, chemical and other industries, for the preservation of plasma and biological products and cryogenic test of components and materials.



Energy efficient hydrocarbon (HC) refrigeration system

Optimised refrigeration system, utilising high-efficiency HC compressor significantly reduces energy consumption.



Greener by design

HC refrigerants are natural non-toxic and more environmentally friendly than HFC refrigerants. This alongside the HC compressor technology and LBA foamed polyurethane insulation layer, make this unit greener and in-line with European ROHS directives and environmental protection guidelines.



Large capacity, superior uniformity

Built-in evaporator for faster cooling speed and uniform temperature throughout the cabinet, $\pm 3^{\circ}\text{C}$. Large internal space with adjustable shelves for flexible configuration.



Low noise

Optimised system and cabinet design ensures low noise emissions, less than 44dB.

Qingdao Haier Biomedical Co.,Ltd.

No.280 Feng Yuan Road, High-tech Zone,
Qingdao, 266109, P.R. China
E-mail: inquiry@haierbiomedical.com
Website: www.haiermedical.com



Haier Biomedical
International



Haier Biomedical
International



@haiermedicalint



Haier Biomedical
International



Haier Biomedical
International



Easy to clean and corrosion resistant

Electric zinc plate powder sprayed internal liner and large round corner design and coated steel plate exterior design ensure reliable corrosion prevention which is easy to clean.

Ergonomic handle design: easy access to storage space, built in lock and padlock features.

4 multi-directional casters and 2 lockable feet make it easy to move, level and lock in place.



Microcomputer electronic thermostat, LCD digital display of inside temperature, with 0.1°C display accuracy.



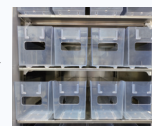
Double seal design provides better insulation and saves energy.

Inner doors prevent rapid loss of cold air, saving energy and reducing temperature fluctuations.



Flexible internal storage

Equipped with 5 plastic coated steel wire shelves with optional stainless steel shelves, which are adjustable to meet the different requirements of users.



Plastic ABS drawer (optional): 25 blood bags (450ml/bag) can be loaded for one drawer, totally 750 blood bags for 30 drawers. (Note: The dimension of one blood bag is 125*26*190mm)



Microprocessor control system

- Microcomputer electronic thermostat, LCD temperature display, display precision 0.1°C, inside temperature set point -10~-30°C (adjustable).
- Multiple alarm functions including high temperature alarm, low temperature alarm, sensor fault alarm, power off alarm, open door alarm, high ambient temperature alarm.
- Sound and light alarm mode can be connected to a remote alarm interface.
- Battery backup alarm function operates continuously for >24hr in the event of a power outage.
- Standard configuration: RS485 port.
- Optional USB interface and temperature logger.



Superior thermal insulation performance

70mm super thick insulation layer design, double door seals plus three inner doors, superior thermal insulation and energy saving effect.



Porthole

Portholes as standard, allows for independent testing of cabinet temperature.



Security lock

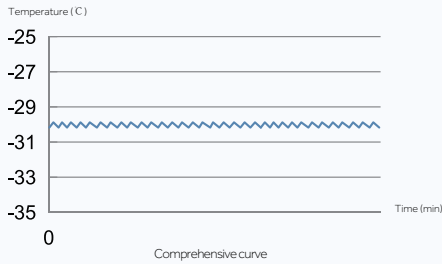
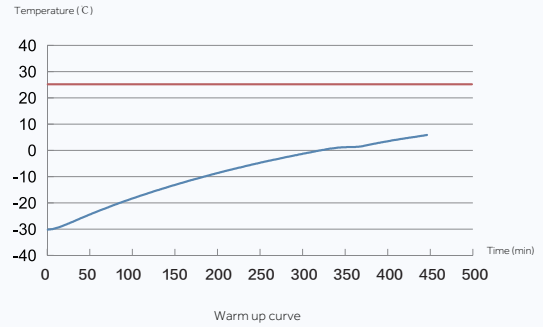
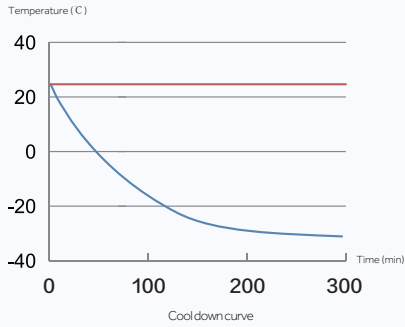
Built-in lock and padlock available, convenient and safe for multiple users or independent management as needed.



Chart recorder

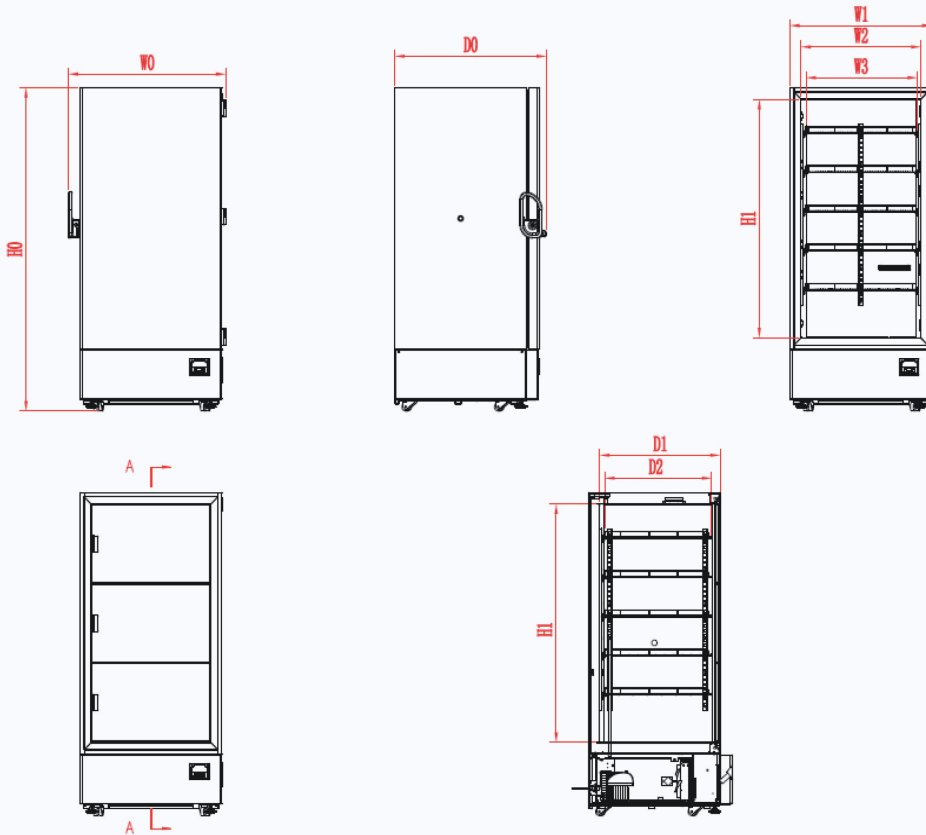
Optional chart recorder for temperature records.

Typical Performance Characteristics in 25 °C Ambient: DW-30L818



— Ambient Temp.
— Cabinet Temp.

Product Dimension Drawing



Remark:
 W0: Overall Width
 W1: Freezer Width
 W2: Internal Width
 W3: Internal Shelf Width
 D0: Overall Depth
 D1: Internal Depth
 D2: Internal Shelf Depth
 H0: Overall Height
 H1: Internal Height

CODE MODEL	W0	W1	W2	W3	D0	D1	D2	H0	H1
DW-30L818	988mm	890mm	750mm	698mm	951mm	755mm	671mm	1980mm	1460mm



Model		DW-30L818	
Technical Data	Cabinet Type	Upright	
	Climate Class	SN N	
	Cooling Type	Direct Cooling	
	Defrost Mode	Manual	
	Refrigerant	HC	
	Sound Level (dB(A))	44	
Performance	Cooling Performance (°C)	-30	
	Temperature Range(°C)	-10~-30	
Control	Controller	Microprocessor	
	Display	LCD	
Electrical Data	Power Supply (V/HZ)	220~240/50	
	Electrical Current (A)	2.8	
Dimensions	Capacity (L/Cu.Ft)	818/28.9	
	Net/Gross Weight (approx)	(kg)	205/235
		(lbs)	451.9/518.1
	Interior Dimension (W*D*H)	(mm)	750*755*1460
		(in)	29.5/29.7/57.5
	Exterior Dimension (W*D*H)	(mm)	988*951*1980
		(in)	38.9/37.4/78.0
	Packing Dimension (W*D*H)	(mm)	1040*1035*2110
(in)		40.9*40.7*83.1	
Container Load (20'/40'/40'H)		10/22/22	
Alarms	High/Low Temperature	Y	
	Remote Alarm	Y	
	Power Failure	Y	
	Sensor Error	Y	
	Low Battery	N	
	High Ambient Temperature	Y	
	Dirty Condenser	N	
	Door Ajar	Y	
Accessories	Caster	Y	
	Leveling Feet	Y	
	Porthole	Y	
	Drawers/InnerDoors	Optional/3	
	Adjustable Shelves	Y (5)	
	USB Interface	Optional	
	RS485	Optional	
	NFC	N	
	Temperature Recorder	Optional	
Other	Certificate	CE	

*Haier Biomedical reserves the right to change products and specifications without prior notice.