

-40°C Chest Biomedical Freezer



DW-40W138J/255J/380J

Scope of Application :

This product is designed to store vaccines, blood plasma and many other biological materials. Suitable for scientific research institutes, blood stations, hospitals, centers for disease control and prevention, and material science, electronics and chemical laboratories.

Innovative Design

- ◎ Energy saving hydrocarbons
- ◎ Superior insulation performance
- ◎ Multiple alarms
- ◎ Safe and reliable

Qingdao Haier Biomedical Co.,Ltd.

No.280 Feng Yuan Road, High-tech Zone,
Qingdao, 266109, P.R. China
E-mail: inquiry@haierbiomedical.com
Website: www.haiermedical.com



Haier Biomedical
International



Haier Biomedical
International



@haiermedicalint



Haier Biomedical
International



Haier Biomedical
International

Product Advantages



Temperature Control

- Microcomputer control, digital temperature display, display precision is 0.1°C. Adjustable temperature set point -20°C--40°C
- User settable temperature alarms



Refrigeration System

- Durable, market-leading brand compressors and EBM condensing fan ensure a high refrigeration efficiency and maximizes temperature performance
- High density insulation layer delivers superior insulation performance
- Evaporator and condenser design delivers excellent refrigeration efficiencies
- Non-toxic, environmentally-friendly hydrocarbon refrigerants



Safety System

- Multiple alarms: high/low temperature alarm/sensor error alarm/power failure alarm. Optional high ambient warning and remote alarm contacts
- Battery backed-up alarm will alert for more than 24 hours in case of power failure
- Equipped with overcurrent protector for safety

Ergonomic Design



The safety door lock is designed to prevent unintended access.



The Φ 25mm porthole is configured for easy access for monitoring and other test probes.



Equipped with 4 universal casters with brake design, easy to move and fix in place.



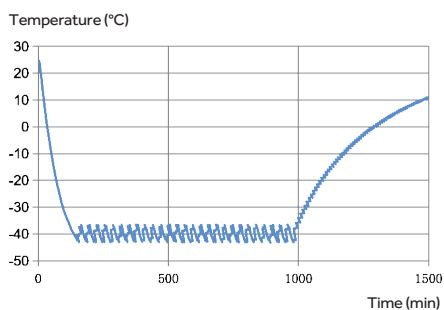
Optional remote alarm terminal



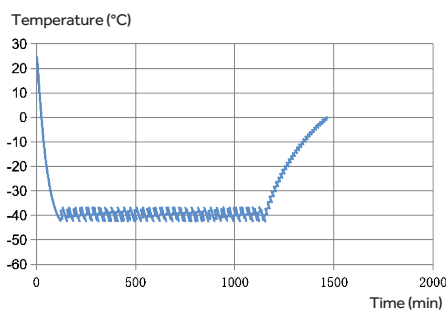
Optional RS485 or USB port (either-or)

Typical Performance Characteristics

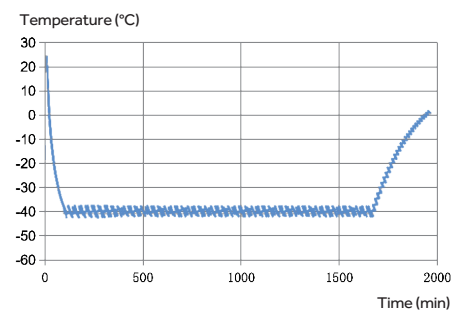
DW-40W138J



DW-40W255J



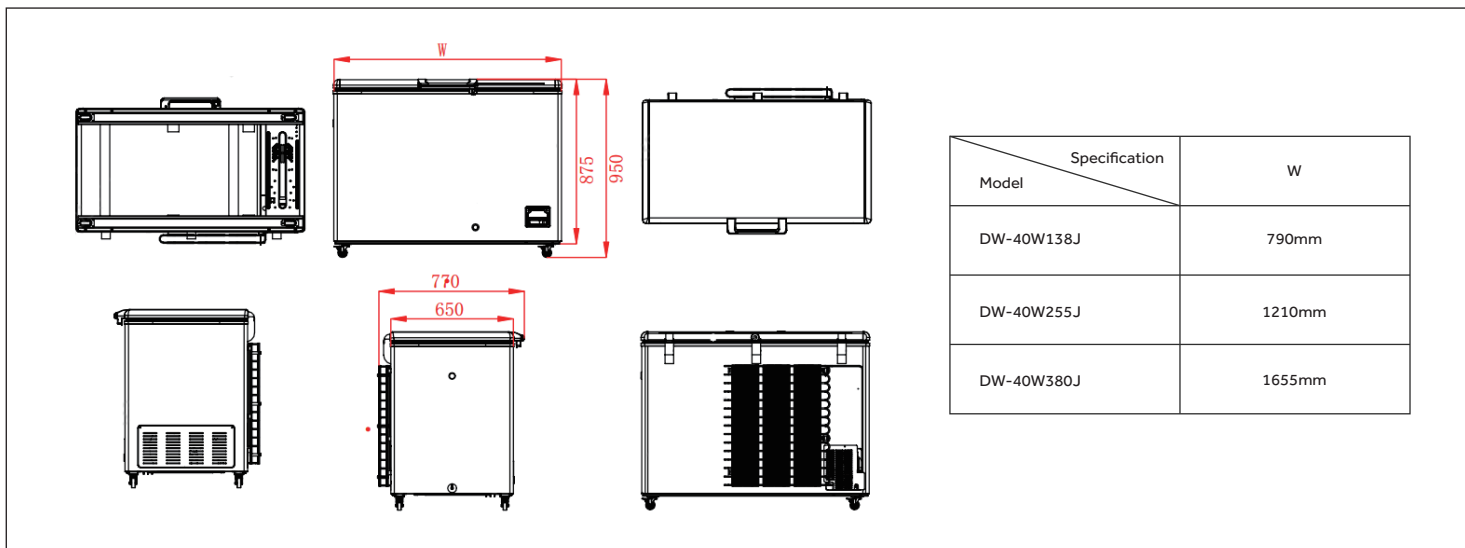
DW-40W380J



Product Parts Diagram



Product Dimension Drawings



Specifications



	Model	DW-40W138J	DW-40W255J	DW-40W380J	
Technical Data	Cabinet Type	Chest	Chest	Chest	
	Climate Class	SN N	SN N	SN N	
	Cooling Type	Direct Cooling	Direct Cooling	Direct Cooling	
	Defrost Mode	Manual	Manual	Manual	
	Refrigerant	HC	HC	HC	
	Sound Level (dB(A))	42	42	42	
Performance	Cooling Performance (°C)	-40	-40	-40	
	Temperature Range (°C)	-20~-40	-20~-40	-20~-40	
Control	Controller	Microprocessor	Microprocessor	Microprocessor	
	Display	LCD	LCD	LCD	
Electrical Data	Power Supply (V/Hz)	220~240/50	220~240/50	220~240/50	
	Electrical Current (A)	2.3	3.1	2.9	
Dimensions	Capacity (L/Cu.Ft)	138/3.9	255/9.0	380/13.4	
	Net/Gross Weight (approx)	(kg)	52/65	76/96	90/115
		(lbs)	114.6/143.3	167.5/211.6	198.4/253.5
	Interior Dimension (W*D*H)	(mm)	580*445*620	1000*445*620	1450*445*620
		(in)	22.8*17.5*24.4	39.4*17.5*24.4	57.1*17.5*24.4
	Exterior Dimension (W*D*H)	(mm)	790*770*950	1210*770*950	1655*770*950
		(in)	31.1*30.3*37.4	47.6*30.3*37.4	65.2*30.3*37.4
	Packing Dimension (W*D*H)	(mm)	840*810*1000	1260*810*1000	1710*815*990
		(in)	33.1*31.9*39.4	49.6*31.9*39.4	67.3*32.1*39.0
	Container Load (20'/40'/40'H)		28/56/56	16/36/54	12/28/28
Alarms	High/Low Temperature	Y	Y	Y	
	Remote Alarm	Optional	Optional	Optional	
	Power Failure	Y	Y	Y	
	Sensor Error	Y	Y	Y	
	Low Battery	N	N	N	
	High Ambient Temperature	Optional	Optional	Optional	
	Dirty Condenser	N	N	N	
	Door Ajar	N	N	N	
Accessories	Castor	Y	Y	Y	
	Leveling Feet	N	N	N	
	Porthole	Y	Y	Y	
	Drawers/Inner Doors	N	N	N	
	Adjustable Shelves	N	N	N	
	USB Interface	Optional	Optional	Optional	
	RS485	Optional	Optional	Optional	
	NFC	N	N	N	
	Temperature Recorder	N	N	N	
Others	Certificate	CE	CE	CE	

*Haier Biomedical reserves the right to change products and specifications without prior notice.